

SAILUN
TIRE



PASSION
DRIVES
GREATNESS



	<p>VALENCIA CF GLOBAL TIRE PARTNER</p>	
---	--	---

Who Are We



World Renowned Manufacturer

From humble beginnings as a manufacturing testing platform to becoming the 18th largest manufacturer in the world in less than 10 years, Sailun pushes the limit of tire production research and development to ensure we stay customers centric. Our goal is always to provide customers and end users with the best value tire products and services. Therefore, we have established local distribution and sales support staff in key areas and ensured we partner with quality distributors who fall in line with the Sailun Tire vision.



Research & Development

The roots of Sailun dig deep and have close connections with one of the premiere schools focusing on rubber and tire technology – Qingdao School of Science and Technology. The cooperation between the school and Sailun continues to this day and together we are defining what it means to be a quality tire manufacturer. Sailun stays committed to this level of development by consistently investing 30% of our total revenue into our R&D programs.

Our Passion

Our passion is our customers - we push our own capabilities every day to ensure you receive the best quality products and services to boost your business.

Our Vision

We look to create a product for end-users worldwide that provide comparable quality and safety, but at a value price.

History

2002

November - Qingdao Sailun Tire Co., Ltd. is established in Qingdao, China.

2003

April - Sailun Industrial Park is completed.

2004

September - Sailun obtains DOT certification from the United States Transport Authority.

2006

In November, the first all steel OTR tire product was successfully produced.

2007

July - PCR factory is officially put into use. The company is renamed "Sailun Tire Co., Ltd."

2008

August - With the support of the National Development and Reform Commissions of China, the company begins renovations on the tire demonstration production line.

2009

April - Sailun is awarded the honor of being named the as the tire technology research demonstration base of China.

2011

Sailun becomes the first private tire manufacturer to be listed on the Shanghai Stock Exchange.

2012

April - Sailun Vietnam factory begins construction.

June - opening of the new R&D center in Qingdao. Sailun obtains majority stake in Shenyang Peace Dove Tire Co., Ltd.

2013

June - Sailun Vietnam factory officially opens. New OTR 40.00R57 product size is approved for production.

2014

January - Sailun acquires 100% stake in KRT Group.

April - Sailun acquires 52% stake in Goma Group.

2015

July - Sailun Group and Zhengzhou Nissan enter their first off-road rally together at the Taklimakan International Rally

2016

August - Sailun successfully manufactures the world's largest OTR tire size, 63 inches.

2017

June - Sailun Group Named "China Top 500 Brand".

August - Sailun Vietnam's first specialty tire is completed.

2018

November - Sailun Motorsport crowned China D1GP Singles and Drift-Chase Champions.

December - Sailun and Cooper announce Vietnam Plant Cooperation.

2019

June - Sailun group brand value reaches 50 billion RMB, ranked 157th among Chinese brands.

July - Sailun becomes Valencia CF Global Tire Partner.

August - Sailun named as a top 3 Chinese Tire Company.

November - Sailun and Cooper ACTR Vietnam Factory open. Sailun Motorsport places in Top 8 of the FIA IDC in Tsukuba, Japan.

Sailun Tire Reaches the Top 8 of FIA Intercontinental Drifting Cup

On Nov. 30th and Dec. 1st, the world's highest level of drifting competition, the 2019 FIA Intercontinental Drifting Cup (IDC), officially started in Tsukuba Circuit, Ibaraki, Japan. 25 top drivers from 16 countries including China, Japan, England, Thailand, Malaysia, Italy, New Zealand and more served up a visual feast to racing enthusiasts. In the end, 3 drivers from Sailun Tire Drift Team reached the top 8 showcasing the strength of Sailun Tire products and the skill of the drivers.

In order to enter the FIA IDC, all participants are required to have obtained at least one national championship title to qualify. As their first entry on the global competition stage, Sailun Tire Drift Team were equipped with brand new racing cars and selected outstanding drivers with the likes of Tengku Djan Ley, Chen Wenqian, Feng Renzhi, and Xia Changhao for this world-class competition. In the face intense competition and an unfamiliar track, the team delivered their best performance to-date. 3 drivers except Xia Changhao reached into the last 16 during the singles qualifying rounds and the drift chase finals. In the final, Feng Renzhi was pitted against the winner of 2017 FIA IDC, Masato Kawabata, while Tengku Djan Ley had to take on Mad Mike, whose car has the most powerful engine, and Chen Wenqian against the champion of 2018 FIA IDC, Georgy Chivchyan. The had to take on the world's top racing drivers in their debut on the world stage. In the end, Feng Renzhi and Tengku Djan Ley reached the top eight showing their extraordinary strength and immeasurable potential.

Sailun Group partners from Central Asia and Southeast Asia were there help cheer the team on in their first foray and experience the excellent product performance of Sailun Tire products.

The future of Sailun Tire Drift Team is bright and worth following up on. Not only do the team drivers have great potential, but the product strength of the Sailun drift products will only continue to improve. It is well known that tires are a racing car's biggest performance variable during competition. Great tires will naturally promote better results. It cannot be overlooked that tires designed for the track conditions and the capabilities of the driver will greatly increase a drivers' confidence. Due to the continued win streaks and after continuous racing tire tests, technology accumulation, and the use of cutting-edge technology, Sailun Tire officially established the SAILUN MOTORSPORT department in the beginning of October 2019.



The department specializes in racing tire R&D, slick and semi-slick tire testing, provides on-site technical support to the drifting team, and are in charge of the global sales of the newest category of Sailun tire products. "GENE R", the professional sports tires produced by SAILUN MOTORSPORT, are divided into two series: GENE R Podium, which are racing specific, and GENE R Pole which are meant for amateur and street purposes. Both product series are planned for launch in early 2020 for global consumers. Consumers will soon be able to experience the driving experience of top-notch tires in their daily lives. In the future, Sailun Tire will continue to launch new tire products for racing, rally, formula, and more to increase the product types, develop top of the line tire technology, and to export china-developed tire products to world-class events.

During this foray onto the international scene, Sailun Tire Drift Team displayed the true strength of Chinese drivers and Chinese tire brands to the world. In the future, Sailun Tire will continue to improve their capabilities and achieve better results in this, and more, world-class events.

Sailun Tire Teams up with Valencia CF

Exciting Partnership Delivers Thrilling Best-in-Class Performance Together



Sailun Tire is proud to announce its first major global sports partnership with prestigious Valencia CF, one of the most well-recognized football clubs in La Liga with strong supporters and fans all over the world. This exciting announcement marks the very first time a Chinese brand like Sailun has ever been present in La Liga, as well as the first time appearing on an official jersey of a top European league team.



"Our incredible partnership is based on the reflected values shared between both organizations: embodying quality (football), commitment to our partners (fans), pursuing excellence (on the field), plus incredible levels of teamwork and collaboration. We are extremely excited to work with the wonderful players, staff, and fans of Valencia CF." said Chen Huang, Managing Director of Sailun Tire Europe.

Similarly to the innovative tire brand, Valencia CF is also known for delivering thrilling performance and having an equally relentless commitment to winning, with six La Liga titles, eight Copa del Rey titles, one Supercopa de España and one Copa Eva Duarte to their credit. Known throughout Europe as home to one of the best youth academy programs, Valencia CF is equally as focused on investing in the future, just like the talented team at Sailun Tire.

Through this major sports partnership, Valencia CF offers a strong global platform for Sailun Tire to create direct engagement with customers and consumers – letting sports fans and everyday drivers out there discover the true product value Sailun has to offer as the smarter alternative to competitors. Valencia CF not only reflects the core company values of Sailun, but also boasts a passionate fan base and a fantastic platform to help communicate and amplify the Sailun brand message on a global scale.

"We ourselves in the past two years have decided to have greater ambitions as a team to what we can do in the world of football. One of our greatest ambitions is to build the Valencia CF academy to develop great players not only for Valencia but other clubs also; we are heading in this direction quite successfully. We are excited to have Sailun along for this journey and demonstrate them that they have made the right choice to partner with our club," said Mr. Anil Murthy, President of the Board of Valencia CF.



About Sailun – Our Future
The overall goal of Sailun Tire is to become a top 10 tire manufacturer by the year 2025, and Sailun is prepared to employ all of its assets to do so. This includes the use of modern, smart tire manufacturing bases in China and Vietnam, plus local R&D bases in Canada, Germany, China, and Vietnam to help support its global operations at a localized level.

About Valencia CF
Valencia CF, one of the most decorated Spanish football clubs both nationally and internationally, was founded March 18, 1919 by Octavio Augusto Milego and Gonzalo Medina. The club's centenary year was marked by an exceptional season in which it brought home the Spanish Copa del Rey, the eighth in its collection, on top of classifying to compete in the UEFA Champions League for the second consecutive season.



SAILUN-PTPA FOUNDATION



Sailun Tire was tested in North America by parents from the Parent Tested Parent Approved (PTPA) foundation and has numerous products approved for safety on the road. Check out our list of approved products here:

<http://ptpa.com/winners/>

Why Choose Sailun?

Are you a distributor looking to add greater value to your line-up? Look no further than the quality engineered Sailun products to help benefit your brand line-up.

Because  **SAILUN**
TIRE



Category Leader

Sailun is the
18th
largest tire manufacturer in the world.



Full Product Line

It is Sailun's main focus to develop products that are customer-lead and market oriented, which ensures they meet customer requirements. Through this process we have developed a full line of quality PLT, TBR, and OTR tire products that have been proven to perform in any conditions.



Quality Manufacturing

Quality Assurance and Quality Control are required when developing a product built to keep people safe. That is why Sailun only uses equipment from industry leading suppliers and a self-developed manufacturing process control system to ensure product quality.



Great Brand Value

Value doesn't stop at the quality of our products, it is also ingrained throughout the tire life cycle. Our missions is to generate the greatest value possible to all stakeholders at every stage of the process, and this ethos is incorporated into R&D, production, logistics, sales, and marketing.



Research & Development

This is where Sailun products are born. Our 30% annual investment of revenue is geared towards improving our testing capabilities, equipment, and empowering our engineering teams in Europe, North America, and Vietnam.



Excellence in Channel Support

"Think Global, Act Local": Sailun maintains dedicated support centers around the world staffed with tire industry professionals to help service customers locally.

ABBREVIATIONS

P.R. = PLY RATING

L.I. / S.R. = LOAD INDEX / SPEED RATING

O.D. = OVERALL DIAMETER (MM)

S.W. = SECTION WIDTH (MM)

T.D. = TREAD DEPTH (MM)

R.W. = RIM WIDTH (IN)

OWL = OUTLINED WHITE LETTER

RWL = RAISED WHITE LETTER

Speed Rating	Speed km/h	Speed Rating	Speed km/h
A1	5	K	110
A2	10	L	120
A3	15	M	130
A4	20	N	140
A5	25	P	150
A6	30	Q	160
A7	35	R	170
A8	40	S	180
B	50	T	190
C	60	H	210
E	70	V	240
F	80	W	270
G	90	Y	300
J	100		

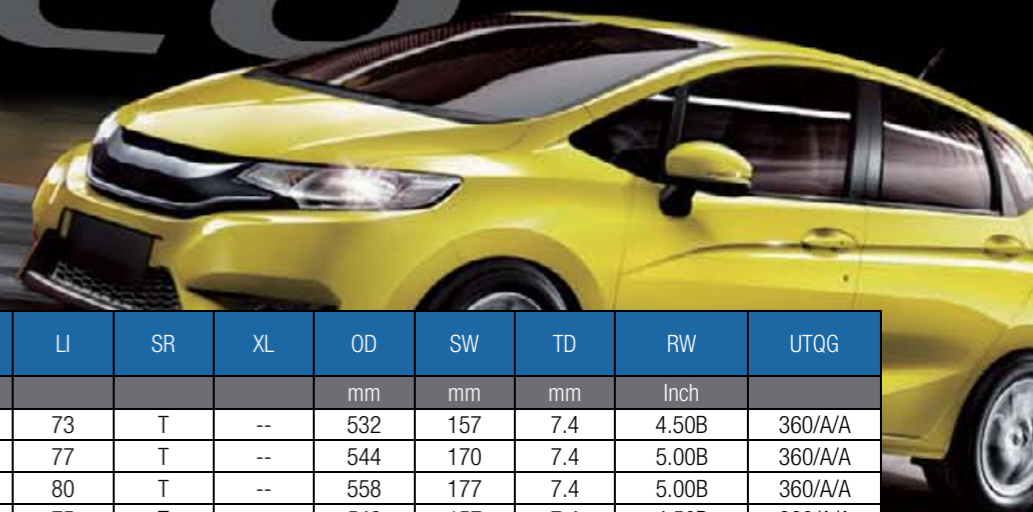
CONTENTS

ATREZZO ECO	08
ATREZZO ELITE	10
ATREZZO 4 SEASONS	14
INSPIRE	16
ATREZZO SH406	18
ATREZZO TOURING LS	22
ATREZZO TOURING WR	24
ATREZZO R01 SPORT	26
ATREZZO ZSR	28
ATREZZO ZSR SUV	32
ATREZZO SVR LX	34
ATREZZO SVR LX+	36
ATREZZO SVA1	38
TERRAMAX M/T	40
TERRAMAX HLT	42
TERRAMAX A/T	44
TERRAMAX AT-M	48
TERRAMAX AT4S	50
TERRAMAX CVR	52
NEW TURISMO SV57	54
NEW TURISMO SU58	56
NEW TURISMO SU59	58
COMMERCIO VX1	60
COMMERCIO VX2	62
COMMERCIO VX+	64
SL12	66
EXTMILE SL15 & SL16	68
ENDURE WSL1	70
ICE BLAZER WSL2	72
ICE BLAZER ALPINE+	74
ICE BLAZER EVO	76
ICE BLAZER WST1	78
ICE BLAZER WST2 LT	82
ICE BLAZER WST3	84
NEW ICE BLAZER ARCTIC	88
NEW ICE BLAZER ARCTIC SUV	90
NEW ICE BLAZER ARCTIC EVO	92
ATREZZO RUN-FLAT	94

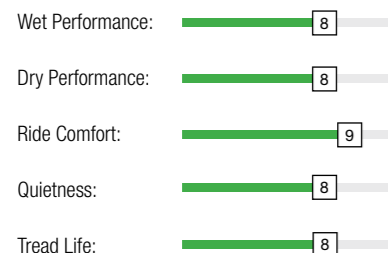


HIGH PERFORMANCE TIRE

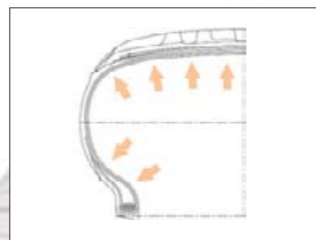
ATREZZO ECO



PERFORMANCE RATINGS:



Three wide main grooves and small lateral grooves that run through the sidewall effectively enhance wet grip and improve hydroplaning resistance.



► Adjusted the internal structure of the tire to optimize the distribution of contact stress which improves comfort and lowers rolling resistance.



⚡ Added a lightning pattern in the tread for greater aesthetics.

◆ Two center ribs and reinforced grooves help improve tire rigidity for excellent handling. Effectively reduces rolling resistance and improves fuel economy.

◆ Solid large block shoulder design provides exceptional grip to ensure vehicle stability.

	SIZE	PR	LI	SR	XL	OD	SW	TD	RW	UTQG
						mm	mm	mm	Inch	
13	155/65R13	--	73	T	--	532	157	7.4	4.50B	360/A/A
	165/65R13	--	77	T	--	544	170	7.4	5.00B	360/A/A
	175/65R13	--	80	T	--	558	177	7.4	5.00B	360/A/A
	155/70R13	--	75	T	--	548	157	7.4	4.50B	360/A/A
	165/70R13	--	79	T	--	562	170	7.4	5.00B	360/A/A
	175/70R13	--	82	T	--	576	177	7.4	5.00B	360/A/A
	185/70R13	--	86	T	--	590	189	7.4	5.50B	360/A/A
	155/80R13	--	79	T	--	578	157	7.4	4.50B	360/A/A
	165/80R13	--	83	T	--	594	165	7.4	4.50B	360/A/A
14	165/55R14	--	72	V	--	538	170	7.4	5J	360/A/A
	165/60R14	--	75	H	--	554	170	7.4	5J	360/A/A
	165/60R14	--	75	T	--	554	170	7.4	5J	360/A/A
	185/60R14	--	82	H	--	578	189	7.4	5 1/2J	360/A/A
	195/60R14	--	86	H	--	590	201	7.4	6J	360/A/A
	155/65R14	--	75	T	--	558	157	7.4	4 1/2J	360/A/A
	165/65R14	--	79	T	--	570	170	7.4	5J	360/A/A
	175/65R14	--	82	T	--	584	177	7.4	5J	360/A/A
	175/65R14	--	82	H	--	584	177	7.4	5J	360/A/A
	175/65R14	--	86	T	XL	584	177	7.4	5J	360/A/A
	185/65R14	--	86	H	--	596	189	7.4	5 1/2J	360/A/A
	185/65R14	--	86	T	--	596	189	7.4	5 1/2J	360/A/A
	195/65R14	--	89	H	--	610	201	7.4	6J	360/A/A
	155/70R14	--	77	H	--	574	157	7.4	4 1/2J	360/A/A
	165/70R14	--	81	T	--	588	170	7.4	5J	360/A/A
	165/70R14	--	85	T	XL	588	170	7.4	5J	360/A/A
	175/70R14	--	84	T	--	602	177	7.4	5J	360/A/A
	175/70R14	--	88	T	XL	602	177	7.4	5J	360/A/A
185/70R14	--	88	T	--	616	189	7.4	5 1/2J	360/A/A	
185/70R14	--	88	H	--	616	189	7.4	5 1/2J	360/A/A	
15	195/70R14	--	91	H	--	630	201	7.4	6J	360/A/A
	205/70R14	--	95	H	--	644	209	7.4	6J	360/A/A
	175/80R14	--	88	T	--	636	177	7.4	5J	360/A/A
	165/50R15	--	72	V	--	547	170	7.4	5J	360/A/A
	165/55R15	--	75	V	--	563	170	7.4	5J	360/A/A
	175/55R15	--	77	T	--	573	182	7.4	5 1/2J	360/A/A
	155/60R15	--	74	T	--	567	157	7.4	4 1/2J	360/A/A
	175/60R15	--	81	V	--	591	177	7.4	5J	360/A/A
	175/60R15	--	81	H	--	591	177	7.4	5J	360/A/A
	145/65R15	--	72	T	--	569	150	7	4 1/2J	360/A/A
	165/65R15	--	81	T	--	595	170	7.4	5J	360/A/A
	165/65R15	--	81	H	--	595	170	7.4	5J	360/A/A
175/65R15	--	84	H	--	609	177	7.4	5J	360/A/A	
175/65R15	--	88	T	XL	609	177	7.4	5J	360/A/A	
175/65R15	--	88	H	XL	609	177	7.4	5J	360/A/A	



ATREZZO ELITE

PERFORMANCE RATINGS:

Wet Performance: 9

Dry Performance: 9

Ride Comfort: 8

Quietness: 8

Tread Life: 8



Four wide main grooves and tread sipe design effectively drain water to improve wet grip.



Asymmetric tread design whose inner tread elements help provide efficient drainage, and the outer tread elements offer exceptional handling to obtain optimal driving performance.



A strip within the outer groove not only makes the outer block more robust, but also improves the handling performance. The design adds a special and attractive look to the tire.



Simple staggered layer groove design makes the pattern more dynamic.



	SIZE	PR	LI	SR	XL	OD	SW	TD	RW	UTQG
						mm	mm	mm	Inch	
14	185/55R14	--	80	H	--	560	194	7.4	6J	360/A/A
	195/50R15	--	82	H	--	577	201	7.7	6J	360/A/A
	195/50R15	--	82	V	--	577	201	7.7	6J	360/A/A
	205/50R15	--	86	V	--	587	214	7.7	6 1/2J	360/A/A
	185/55R15	--	82	H	--	585	194	7.7	6J	360/A/A
	185/55R15	--	82	V	--	585	194	7.7	6J	360/A/A
	195/55R15	--	85	H	--	595	201	7.7	6J	360/A/A
	195/55R15	--	85	V	--	595	201	7.7	6J	360/A/A
	205/55R15	--	88	V	--	607	214	7.7	6 1/2J	360/A/A
	185/60R15	--	84	H	--	603	189	7.7	5 1/2J	360/A/A
	185/60R15	--	84	T	--	603	189	7.7	5 1/2J	360/A/A
	185/60R15	--	88	H	XL	603	189	7.7	5 1/2J	360/A/A
	185/60R15	--	88	T	XL	603	189	7.7	5 1/2J	360/A/A
	195/60R15	--	88	H	--	615	201	7.7	6J	360/A/A
15	195/60R15	--	88	V	--	615	201	7.7	6J	360/A/A
	205/60R15	--	91	H	--	627	209	7.7	6J	360/A/A
	205/60R15	--	91	V	--	627	209	7.7	6J	360/A/A
	205/60R15	--	95	H	XL	627	209	7.7	6J	360/A/A
	225/60R15	--	96	V	--	651	228	8.2	6 1/2J	360/A/A
	185/65R15	--	88	H	--	621	189	7.7	5 1/2J	360/A/A
	185/65R15	--	88	T	--	621	189	7.7	5 1/2J	360/A/A
	185/65R15	--	92	T	XL	621	189	7.7	5 1/2J	360/A/A
	195/65R15	--	91	H	--	635	201	7.7	6J	360/A/A
	195/65R15	--	91	T	--	635	201	7.7	6J	360/A/A
	195/65R15	--	91	V	--	635	201	7.7	6J	360/A/A
	195/65R15	--	95	H	XL	635	201	7.7	6J	360/A/A
	205/65R15	--	94	H	--	647	209	7.7	6J	360/A/A
	205/65R15	--	94	V	--	647	209	7.7	6J	360/A/A
	205/65R15	--	99	T	XL	647	209	7.7	6J	360/A/A
	215/65R15	--	96	H	--	661	221	7.7	6 1/2J	360/A/A
215/65R15	--	96	T	--	661	221	7.7	6 1/2J	360/A/A	
215/65R15	--	100	H	XL	661	221	7.7	6 1/2J	360/A/A	



ATREZZO ELITE

	SIZE	PR	LI	SR	XL	OD	SW	TD	RW	UTQG
						mm	mm	mm	Inch	
16	185/50R16	--	81	V	--	592	194	7.7	6J	360/A/A
	195/50R16	--	84	V	--	602	201	7.7	6J	360/A/A
	195/50R16	--	88	V	XL	602	201	7.7	6J	360/A/A
	195/50R16	--	84	H	--	602	201	7.7	6J	360/A/A
	205/50R16	--	87	V	--	612	214	7.7	6 1/2J	360/A/A
	225/50R16	--	96	W	XL	632	233	7.7	7J	360/A/A
	185/55R16	--	83	H	--	610	194	7.7	6J	360/A/A
	185/55R16	--	83	V	--	610	194	7.7	6J	360/A/A
	185/55R16	--	87	V	XL	610	194	7.7	6J	360/A/A
	195/55R16	--	87	H	--	620	201	7.7	6J	360/A/A
	195/55R16	--	87	V	--	620	201	7.7	6J	360/A/A
	195/55R16	--	91	V	XL	620	201	7.7	6J	360/A/A
	205/55R16	--	91	H	--	632	214	7.7	6 1/2J	360/A/A
	205/55R16	--	91	V	--	632	214	7.7	6 1/2J	360/A/A
	205/55R16	--	91	W	--	632	214	7.7	6 1/2J	360/A/A
	205/55R16	--	94	V	XL	632	214	7.7	6 1/2J	360/A/A
	215/55R16	--	97	H	XL	642	226	7.7	7J	360/A/A
	215/55R16	--	97	W	XL	642	226	7.7	7J	360/A/A
	225/55R16	--	99	V	XL	654	233	7.7	7J	360/A/A
	195/60R16	--	89	H	--	640	201	7.7	6J	360/A/A
	195/60R16	--	89	V	--	640	201	7.7	6J	360/A/A
	205/60R16	--	92	H	--	652	209	7.7	6J	360/A/A
	205/60R16	--	92	V	--	652	209	7.7	6J	360/A/A
	205/60R16	--	96	H	XL	652	209	7.7	6J	360/A/A
	205/60R16	--	96	V	XL	652	209	7.7	6J	360/A/A
	215/60R16	--	95	H	--	664	221	7.7	6 1/2J	360/A/A
	215/60R16	--	95	V	--	664	221	7.7	6 1/2J	360/A/A
	215/60R16	--	99	H	XL	664	221	7.7	6 1/2J	360/A/A
	215/60R16	--	99	T	XL	664	221	7.7	6 1/2J	360/A/A
	215/60R16	--	99	V	XL	664	221	7.7	6 1/2J	360/A/A
	225/60R16	--	98	V	--	676	228	7.7	6 1/2J	360/A/A
	225/60R16	--	98	W	--	676	228	7.7	6 1/2J	360/A/A
	225/60R16	--	102	V	XL	676	228	7.7	6 1/2J	360/A/A
	235/60R16	--	100	W	--	688	240	7.7	7J	360/A/A
195/65R16	--	92	V	--	660	201	7.7	6J	360/A/A	
205/65R16	--	95	V	--	672	209	7.7	6J	360/A/A	
215/65R16	--	98	H	--	686	221	7.7	6 1/2J	360/A/A	
215/65R16	--	102	V	XL	686	221	7.7	6 1/2J	360/A/A	
225/65R16	--	100	V	--	698	228	8.2	6 1/2J	360/A/A	

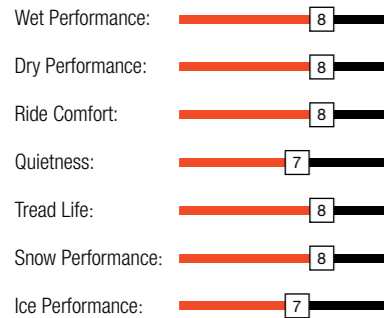
	SIZE	PR	LI	SR	XL	OD	SW	TD	RW	UTQG	
						mm	mm	mm	Inch		
17	225/50R17	--	94	V	--	658	233	7.7	7J	360/A/A	
	205/55R17	--	95	V	XL	658	214	7.7	6 1/2J	360/A/A	
	215/55R17	--	94	V	--	668	226	7.7	7J	360/A/A	
	235/55R17	--	99	V	--	690	245	7.7	7 1/2J	360/A/A	
	235/55R17	--	103	V	XL	690	245	7.7	7 1/2J	360/A/A	
	215/60R17	--	96	V	--	690	221	8.2	6 1/2J	360/A/A	
	225/60R17	--	99	V	--	702	228	7.7	6 1/2J	360/A/A	
	235/60R17	--	102	V	--	714	240	7.7	7J	360/A/A	
	215/65R17	--	99	V	--	712	221	8.2	6 1/2J	360/A/A	
	225/65R17	--	102	V	--	724	228	8.2	6 1/2J	360/A/A	
	235/65R17	--	108	H	XL	738	240	8.2	7J	360/A/A	
	18	215/55R18	--	99	V	XL	693	226	7.7	7J	360/A/A
		225/60R18	--	104	W	XL	727	228	7.7	6 1/2J	360/A/A



ATREZZO 4 SEASONS

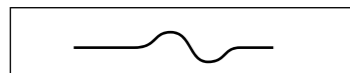


PERFORMANCE RATINGS:



The unique 4 season asymmetric pattern is designed for use all year round. Zigzagged sipe and block design maximize grip in water and snow. The three main grooves quickly and effectively drain water and snow for a safer drive.

1



2

Newly introduced 3-Dimensional grooves and sipes ensure optimal performance for the entire life of the tire.



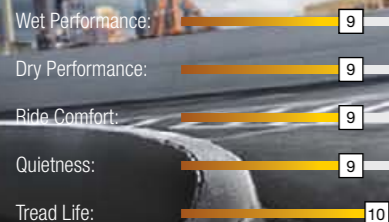
	SIZE	PR	LI	SR	XL	OD	SW	TD	RW	UTQG
						mm	mm	mm	Inch	
13	155/65R13	--	73	T	--	532	157	8	4 1/2J	300/A/A
	155/70R13	--	75	T	--	548	157	8	4 1/2J	300/A/A
	155/80R13	--	79	T	--	578	157	8	4 1/2J	300/A/A
14	185/60R14	--	82	H	--	578	189	8.5	5 1/2J	300/A/A
	155/65R14	--	75	T	--	558	157	8	4 1/2J	300/A/A
	165/65R14	--	79	T	--	570	170	8	5J	300/A/A
	175/65R14	--	82	T	--	584	177	8.5	5J	300/A/A
	185/65R14	--	86	T	--	596	189	8.5	5 1/2J	300/A/A
	165/70R14	--	81	T	--	588	170	8	5J	300/A/A
	195/50R15	--	82	V	--	577	201	8	6J	300/A/A
15	175/55R15	--	77	T	--	573	182	8	5 1/2J	300/A/A
	185/55R15	--	82	H	--	585	194	8.5	6J	300/A/A
	195/55R15	--	85	H	--	595	201	8.5	6J	300/A/A
	155/60R15	--	74	T	--	567	157	8	4 1/2J	300/A/A
	185/60R15	--	84	H	--	603	189	8.5	5 1/2J	300/A/A
	185/60R15	--	88	H	XL	603	189	8.5	5 1/2J	300/A/A
	195/60R15	--	88	H	--	615	201	8.5	6J	300/A/A
	165/65R15	--	81	T	--	595	170	8	5J	300/A/A
	175/65R15	--	84	H	--	609	177	8.5	5J	300/A/A
	175/65R15	--	88	H	XL	609	177	8.5	5J	300/A/A
	185/65R15	--	88	T	--	621	189	8.5	5 1/2J	300/A/A
	185/65R15	--	92	H	XL	621	189	8.5	5 1/2J	300/A/A
	195/65R15	--	91	H	--	635	201	8.5	6J	300/A/A
	195/65R15	--	95	T	XL	635	201	8.5	6J	300/A/A
	195/65R15	--	91	T	--	635	201	8.5	6J	300/A/A
16	195/45R16	--	84	V	XL	582	195	8	6 1/2J	300/A/A
	195/55R16	--	87	V	--	620	201	8.5	6J	300/A/A
	195/55R16	--	91	V	XL	620	201	8.5	6J	300/A/A
	205/55R16	--	91	H	--	632	214	8.5	6 1/2J	300/A/A
	205/55R16	--	94	V	XL	632	214	8.5	6 1/2J	300/A/A
	215/55R16	--	93	H	--	642	226	8.5	7J	300/A/A
	215/55R16	--	97	V	XL	642	226	8.5	7J	300/A/A
	225/55R16	--	95	V	--	654	233	8.5	7J	300/A/A
	225/55R16	--	99	W	XL	654	233	8.5	7J	300/A/A
	205/60R16	--	92	V	--	652	209	8.5	6J	300/A/A
	205/60R16	--	96	V	XL	652	209	8.5	6J	300/A/A
	215/60R16	--	95	H	--	664	221	8.5	6 1/2J	300/A/A
17	215/60R16	--	99	H	XL	664	221	8.5	6 1/2J	300/A/A
	215/65R16	--	102	V	XL	686	221	8.5	6 1/2J	300/A/A
	225/45R17	--	94	V	XL	634	225	8.5	7 1/2J	300/A/A
	225/45R17	--	94	W	XL	634	225	8.5	7 1/2J	300/A/A



ALL-SEASON PERFORMANCE TIRE

INSPIRE

PERFORMANCE RATINGS



Focus on Mileage

1. The tire tread employs a specialized SBR formula and high wear-resistance carbon black which focuses on providing exceptional cut and wear resistance to improve tire mileage.
2. Through finite element simulations, Inspire is designed with an optimized contour design which evenly distributes grip pressure to improve even wear.

Driving Comfort

- Five varying pitch designs created using SJPPS noise simulation effectively reduce noise emissions.
- Application of a frequency distortion while improving driving stability
- Sipe design and stable pattern rigidity improve balance for a more comfortable driving experience

Safety

- The strengthened carcass and the even contact pressure distribution improve safety while also offering greater handling and stability.
- Jagged sipe designs increase stability, reduce block deformation, and improve driving stability.

All-Around Product

- Tread formula design provides excellent wear and cut resistance suitable for multiple driving applications.
- Specialized rubber materials allow the tire to perform exceptionally in both cold and warm weather.
- Varied jagged sipe designs break through water film and improve tread block rigidity for greater traction on both dry and wet road surfaces.



	SIZE	PR	LI	SR	XL	OD	SW	TD	RW	UTQG
						mm	mm	mm	Inch	
14	175/65R14	--	82	H	--	584	177	7.8	5J	520/A/A
	185/65R14	--	86	H	--	596	189	8	5 1/2J	520/A/A
	175/70R14	--	84	T	--	602	177	7.8	5J	520/A/A
	195/70R14	--	91	T	--	630	201	8	6J	520/A/A
15	185/55R15	--	82	H	--	585	194	8	6J	520/A/A
	195/55R15	--	85	V	--	595	201	8	6J	520/A/A
	185/60R15	--	84	H	--	603	189	8	5 1/2J	520/A/A
	195/60R15	--	88	H	--	615	201	8	6J	520/A/A
	175/65R15	--	84	H	--	609	177	7.8	5J	520/A/A
	185/65R15	--	88	H	--	621	189	8	5 1/2J	520/A/A
	195/65R15	--	91	H	--	635	201	8	6J	520/A/A
	205/65R15	--	94	H	--	647	209	8	6J	520/A/A
	205/70R15	--	96	T	--	669	209	8	6J	520/A/A
	215/70R15	--	98	T	--	683	221	8.2	6 1/2J	520/A/A
16	195/50R16	--	84	V	--	602	201	8	6J	520/A/A
	205/50R16	--	87	V	--	612	214	8	6 1/2J	520/A/A
	195/55R16	--	87	H	--	620	201	8	6J	520/A/A
	205/55R16	--	91	V	--	632	214	8.2	6 1/2J	520/A/A
	215/55R16	--	93	H	--	642	226	8.2	7J	520/A/A
	205/60R16	--	92	V	--	652	209	8	6J	520/A/A
	215/60R16	--	95	V	--	664	221	8.2	6 1/2J	520/A/A
	225/60R16	--	98	H	--	676	228	8.2	6 1/2J	520/A/A
	235/60R16	--	100	V	--	688	240	8.2	7J	520/A/A
	205/65R16	--	95	H	--	672	209	8	6J	520/A/A
	215/65R16	--	98	T	--	686	221	8.2	6 1/2J	520/A/A
	225/65R16	--	100	T	--	698	228	8.2	6 1/2J	520/A/A
17	235/65R16	--	103	T	--	712	240	8.2	7J	520/A/A
	215/45R17	--	87	W	--	626	213	8.2	7J	520/A/A
	205/50R17	--	93	V	XL	638	214	8	6 1/2J	520/A/A
	215/50R17	--	95	V	XL	648	226	8.2	7J	520/A/A
	225/50R17	--	94	V	--	658	233	8.2	7J	520/A/A
	215/55R17	--	94	V	--	668	226	8.2	7J	520/A/A
	225/55R17	--	97	V	--	680	233	8.2	7J	520/A/A
	235/55R17	--	99	V	--	690	245	8.2	7 1/2J	520/A/A
	215/60R17	--	96	T	--	690	221	8.2	6 1/2J	520/A/A
	225/60R17	--	99	T	--	702	228	8.2	6 1/2J	520/A/A
18	215/65R17	--	99	T	--	712	221	8.2	6 1/2J	520/A/A
	225/65R17	--	102	T	--	724	228	8.2	6 1/2J	520/A/A
	225/40R18	--	92	W	XL	637	230	8.2	8J	520/A/A
	245/40R18	--	97	W	XL	653	248	8.2	8 1/2J	520/A/A
	225/45R18	--	95	W	XL	659	225	8.2	7 1/2J	520/A/A
	245/45R18	--	100	W	XL	677	243	8.2	8J	520/A/A
19	235/50R18	--	97	W	--	693	245	8.2	7 1/2J	520/A/A
	225/60R18	--	100	H	--	727	228	8.2	6 1/2J	520/A/A
	235/40R19	--	96	V	XL	671	241	8.2	8 1/2J	520/A/A
	225/55R19	--	99	V	--	731	233	8.2	7J	520/A/A
	235/55R19	--	105	V	XL	741	245	8.2	7 1/2J	520/A/A
255/60R19	--	109	H	--	789	260	8.5	7 1/2J	520/A/A	



ALL-SEASON PERFORMANCE TIRE

ATREZZO SH406

PERFORMANCE RATINGS:



Groove Design:
Efficient water drainage and superior high speed stability.



Sipe Design:
Improve head dispersion. Reduced noise emissions.



Reinforced Shoulder:
Greater driving stability.
Improved durability for a longer tread life.





ATREZZO SH406

	SIZE	PR	LI	SR	XL	OD	SW	TD	RW	UTQG
						mm	mm	mm	Inch	
12	145/70R12	--	69	S	--	509	150	7.4	4.50B	460/A/B
	155/70R12	--	73	T	--	523	157	7.4	4.50B	460/A/B
	165/70R12	--	77	T	--	537	170	7.8	5.00B	460/A/B
13	165/60R13	--	73	H	--	528	170	7.8	5.00B	420/A/A
	155/65R13	--	73	T	--	532	157	7.4	4.50B	460/A/B
	165/70R13	--	79	T	--	562	170	7.8	5.00B	460/A/B
	175/70R13	--	82	T	--	576	177	7.8	5.00B	460/A/B
	185/70R13	--	86	T	--	590	189	8	5.50B	460/A/B
	155/80R13	--	79	T	--	578	157	7.4	4.50B	460/A/B
	165/80R13	--	83	T	--	594	165	7.8	4.50B	460/A/B
	155/55R14	--	69	V	--	526	162	7.4	5J	420/A/A
165/55R14	--	72	V	--	538	170	7.8	5J	420/A/A	
165/60R14	--	75	H	--	554	170	7.8	5J	420/A/A	
185/60R14	--	82	H	--	578	189	8	5 1/2J	420/A/A	
195/60R14	--	86	H	--	590	201	8	6J	420/A/A	
165/65R14	--	79	T	--	570	170	7.8	5J	460/A/B	
175/65R14	--	82	T	--	584	177	7.8	5J	420/A/A	
175/65R14	--	82	H	--	584	177	7.8	5J	420/A/A	
175/65R14	--	86	T	XL	584	177	7.8	5J	420/A/A	
185/65R14	--	86	H	--	596	189	8	5 1/2J	420/A/A	
175/70R14	--	84	T	--	602	177	7.8	5J	460/A/B	
175/70R14	--	88	T	XL	602	177	7.8	5J	460/A/B	
185/70R14	--	88	T	--	616	189	8	5 1/2J	460/A/B	
185/70R14	--	88	H	--	616	189	8	5 1/2J	460/A/B	
195/70R14	--	91	T	--	630	201	8	6J	460/A/B	
195/70R14	--	91	H	--	630	201	8	6J	460/A/B	
205/70R14	--	95	T	--	644	209	8	6J	460/A/B	
15	165/50R15	--	72	V	--	547	170	7.8	5J	420/A/A
	175/50R15	--	75	V	--	557	182	7.8	5 1/2J	420/A/A
	195/50R15	--	82	H	--	577	201	8	6J	420/A/A
	165/55R15	--	75	V	--	563	170	7.8	5J	420/A/A
	185/55R15	--	82	H	--	585	194	8	6J	420/A/A
	195/55R15	--	85	H	--	595	201	8	6J	420/A/A
	195/55R15	--	85	V	--	595	201	8	6J	420/A/A
	185/60R15	--	84	H	--	603	189	8	5 1/2J	420/A/A
	195/60R15	--	88	H	--	615	201	8	6J	420/A/A
	205/60R15	--	91	H	--	627	209	8	6J	420/A/A
	215/60R15	--	94	H	--	639	221	8.2	6 1/2J	420/A/A
	175/65R15	--	84	H	--	609	177	7.8	5J	420/A/A
	185/65R15	--	88	H	--	621	189	8	5 1/2J	420/A/A
	195/65R15	--	91	T	--	635	201	8	6J	420/A/A
	195/65R15	--	91	H	--	635	201	8	6J	420/A/A
	205/65R15	--	94	H	--	647	209	8	6J	420/A/A
205/70R15	--	96	T	--	669	209	8	6J	460/A/B	
215/70R15	--	98	T	--	683	221	8.2	6 1/2J	460/A/B	

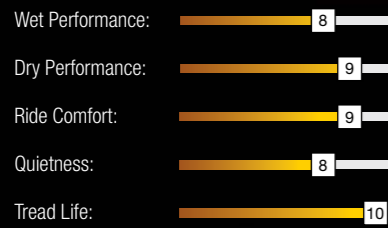
	SIZE	PR	LI	SR	XL	OD	SW	TD	RW	UTQG
						mm	mm	mm	Inch	
16	195/50R16	--	84	V	--	602	201	8	6J	420/A/A
	205/50R16	--	87	V	--	612	214	8	6 1/2J	420/A/A
	225/50R16	--	92	H	--	632	233	8.2	7J	420/A/A
	195/55R16	--	87	H	--	620	201	8	6J	420/A/A
	205/55R16	--	91	H	--	632	214	8	6 1/2J	420/A/A
	205/55R16	--	91	V	--	632	214	8	6 1/2J	420/A/A
	215/55R16	--	97	H	XL	642	226	8.2	7J	420/A/A
	225/55R16	--	99	H	XL	654	233	8.2	7J	420/A/A
	205/60R16	--	92	V	--	652	209	8	6J	420/A/A
	215/60R16	--	95	V	--	664	221	8.2	6 1/2J	420/A/A
	225/60R16	--	98	H	--	676	228	8.2	6 1/2J	420/A/A
	205/65R16	--	95	H	--	672	209	8.2	6J	420/A/A
	215/65R16	--	98	T	--	686	221	8.2	6 1/2J	420/A/A
	225/65R16	--	100	T	--	698	228	8.2	6 1/2J	460/A/B
	235/65R16	--	103	T	--	712	240	8.2	7J	460/A/B
	17	225/45ZR17	--	94	W	XL	634	225	8.2	7 1/2J
225/50R17		--	94	V	--	658	233	8.2	7J	420/A/A
215/55R17		--	94	V	--	668	226	8.2	7J	420/A/A
225/55R17		--	97	V	--	680	233	8.2	7J	420/A/A
215/60R17		--	96	T	--	690	221	8.2	6 1/2J	460/A/B
225/60R17		--	99	T	--	702	228	8.2	6 1/2J	460/A/B
215/65R17		--	99	T	--	712	221	8.2	6 1/2J	460/A/B
225/65R17		--	102	T	--	724	228	8.2	6 1/2J	460/A/B



ALL-SEASON PERFORMANCE TIRE

ATREZZO TOURING LS

PERFORMANCE RATINGS:



The **TOURING LS** is designed with comfort in mind, and engineered to go the distance. The Touring LS provides exceptional handling in both dry and wet weather conditions, while delivering all-season performance and value.

- All-season compound designed for optimal comfort and grip.
- Special compound formulation for enhanced durability and maximum tread life.



- Siping Angles:**
Reduces noise generated when traveling at high speeds and enhances driving stability.
- Variable Pitch Design:**
Optimized to ensure a quiet and smooth ride.
- Large Contact Area:**
Wide, solid footprint for exceptional handling and driver control.



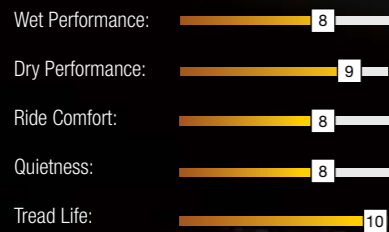
	SIZE	PR	LI	SR	XL	OD	SW	TD	RW	UTQG
						mm	mm	mm	Inch	
13	175/60R13	--	77	T	--	540	177	7.8	5.00B	500/A/B
	165/65R13	--	77	T	--	544	170	7.8	5.00B	640/A/B
	185/70R13	--	86	T	--	590	189	8	5.50B	640/A/B
14	205/60R14	--	88	H	--	602	209	8	6J	500/A/A
	185/65R14	--	86	T	--	596	189	8	5 1/2J	640/A/B
	195/70R14	--	91	T	--	630	201	8	6J	640/A/B
15	185/60R15	--	84	T	--	603	189	8	5 1/2J	640/A/B
	195/60R15	--	88	T	--	615	201	8	6J	640/A/B
	205/60R15	--	91	T	--	627	209	8.2	6J	640/A/B
	215/60R15	--	94	T	--	639	221	8.2	6 1/2J	640/A/B
	185/65R15	--	88	T	--	621	189	8	5 1/2J	640/A/B
	195/65R15	--	91	T	--	635	201	8	6J	640/A/B
	205/65R15	--	94	T	--	647	209	8.2	6J	640/A/B
	205/65R15	--	94	H	--	647	209	8.2	6J	640/A/B
	215/65R15	--	96	T	--	661	221	8.2	6 1/2J	640/A/B
	205/70R15	--	96	T	--	669	209	8.2	6J	640/A/B
16	215/70R15	--	98	T	--	683	221	8.2	6 1/2J	640/A/B
	225/70R15	--	100	T	--	697	228	8.2	6 1/2J	640/A/B
	205/55R16	--	91	H	--	632	214	8.2	6 1/2J	540/A/A
	205/60R16	--	92	H	--	652	209	8.2	6J	540/A/A
	215/60R16	--	95	T	--	664	221	8.2	6 1/2J	640/A/B
	215/60R16	--	95	H	--	664	221	8.2	6 1/2J	640/A/B
	225/60R16	--	98	T	--	676	228	8.2	6 1/2J	640/A/B
17	215/65R16	--	98	T	--	686	221	8.2	6 1/2J	640/A/B
	235/65R16	--	103	T	--	712	240	8.2	7J	640/A/B
	225/55R17	--	97	T	--	680	233	8.2	7J	640/A/B
	215/60R17	--	96	T	--	690	221	8.2	6 1/2J	640/A/B
	225/60R17	--	99	T	--	702	228	8.2	6 1/2J	640/A/B
	235/60R17	--	102	T	--	714	240	8.2	7J	640/A/B
	215/65R17	--	99	T	--	712	221	8.2	6 1/2J	640/A/B
	225/65R17	--	102	T	--	724	228	8.2	6 1/2J	640/A/B
	245/65R17	--	107	T	--	750	248	8.2	7J	640/A/B



ALL-SEASON PERFORMANCE TIRE

ATREZZO TOURING WR

PERFORMANCE RATINGS:



The **TOURING WR** is designed with comfort in mind, and engineered to go the distance. The Touring LS provides exceptional handling in both dry and wet weather conditions, while delivering all-season performance and value.

- All-season compound designed for optimal comfort and road holding capability.
- Special compound formulation for enhanced durability and maximum tread life.



- 1 Large contact area:**
Wide, solid footprint for exceptional handling and driver control.
- 2 Variable Pitch Design:**
Optimized to ensure a quiet and smooth ride.
- 3 Variable Angle Siping:**
Reduces road noise at higher speeds and enhances directional stability.

	SIZE	PR	LI	SR	XL	OD	SW	TD	RW	UTQG
						mm	mm	mm	Inch	
13	185/60R13	--	80	T	--	552	189	8	5.50B	640/A/B
	165/65R13	--	77	T	--	544	170	7.8	5.00B	640/A/B
	175/70R13	--	82	T	--	576	177	7.8	5.00B	500/A/B
	185/70R13	--	86	T	--	590	189	8	5.50B	640/A/B
	165/80R13	--	83	T	--	594	165	7.8	4.50B	500/A/B
14	185/65R14	--	86	H	--	596	189	8	5 1/2J	500/A/A
	185/70R14	--	88	T	--	616	189	8	5 1/2J	640/A/B
15	205/70R15	--	96	T	--	669	209	8	6J	640/A/B
	215/70R15	--	98	T	--	683	221	8.2	6 1/2J	640/A/B
	225/70R15	--	100	T	--	697	228	8.2	6 1/2J	640/A/B
	215/75R15	--	100	T	--	703	216	8.2	6J	640/A/B
	225/75R15	--	102	S	--	719	223	8.2	6J	640/A/B
	235/75R15	--	105	T	--	733	235	8.2	6 1/2J	640/A/B

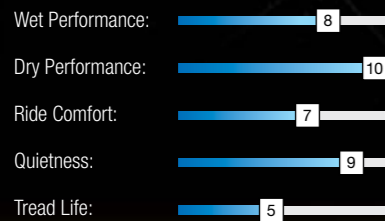


ULTRA HIGH PERFORMANCE TIRE

ATREZZO

RO1 SPORT

PERFORMANCE RATINGS:



ATREZZO RO1 SPORT

- ▶ The normal operating state of the tire has good dry and wet performance to meet normal usage needs. Reaching other higher operating temperatures, the softened tread becomes highly viscous, in turn improving grip performance to meet competition requirements.
- ▶ Specialized tread compounds which are designed to work best in racing conditions.



- 1 Widened tread and wave-like central rib design ensure greater high speed stability.
- 2 Sleek and wide shoulder grooves effectively drain water.
- 3 Big shoulder blocks improve stability and handling to meet performance needs.



High-end product with unique sidewall design; employs curved incisions which fully reflects its sporty and urban look.

Curved grooves improve abrasion resistance and the rounded corners on the tread block edges protects the tire from damage.



	SIZE	PR	LI	SR	XL	OD	SW	TD	RW	UTQG
						mm	mm	mm	Inch	
15	195/50R15	--	82	V	--	577	201	7.1	6J	180/AA/A
	195/55R15	--	89	V	XL	595	201	7.1	6J	180/AA/A
17	215/45ZR17	--	91	W	XL	626	213	7.1	7J	180/AA/A
18	265/35R18	--	97	W	XL	643	271	7.9	9 1/2J	180/AA/A
	225/40ZR18	--	92	W	XL	637	230	7.1	8J	180/AA/A
	235/40R18	--	95	W	XL	645	241	7.1	8 1/2J	180/AA/A
	255/50R18	--	106	V	XL	713	265	7.9	8J	180/AA/A
	255/55R18	--	109	V	XL	737	265	8.2	8J	180/AA/A



ULTRA HIGH PERFORMANCE TIRE

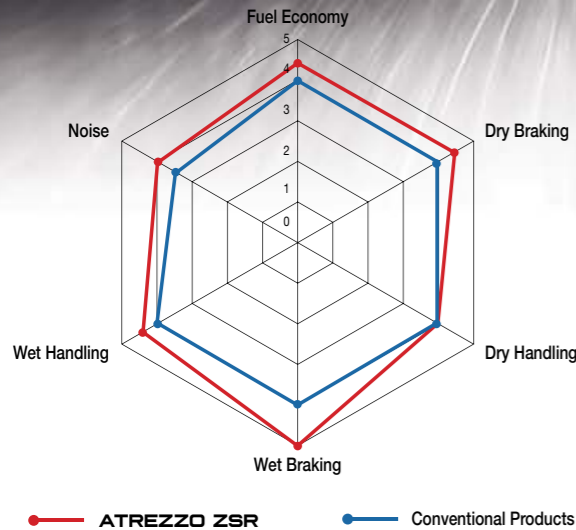
ATREZZO ZSR



In 2011, the series was selected by the global automotive media to be awarded the

“SEMA 2011 Best New Product Award.”

They also won the China domestic tire brand award for the first time.



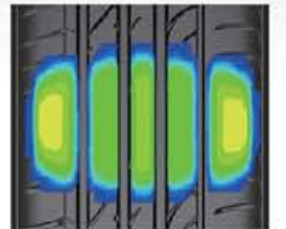
Excellent Drainage Performance

Grooves with varying widths efficiently drain water to reduce hydroplaning and improve fuel efficiency.



Noise Emission

The various groove angles evenly distribute vibrations generated while running to reduce noise emissions. The design has been measured to reduce noise emissions by about 3%.



Longer Tread Life

Through our testing, we have ensured greater driving stability and promoted uniform wear by increasing the tire's ground contact area by 6%.

PERFORMANCE RATINGS:



The new generation **ATREZZO ZSR** is engineered to deliver precise wet and dry handling performance. With an asymmetrical tread design and enhanced tread rubber formula, Atrezzo ZSR rises to the challenge and provides exceptional performance on the street and on the highway.

- Asymmetrical tread design for uncompromising performance.
- Wide shoulder blocks and high angle sipes improve high speed performance.
- Variable pitch tread design provides a smooth, quiet ride.
- Advanced tread compound delivers superior cornering and exceptional handling.
- Deep, circumferential grooves and hundreds of biting edges deliver excellent wet and dry traction.

High Speed Stability

The central rib pattern improves high speed stability to improve driving comfort.

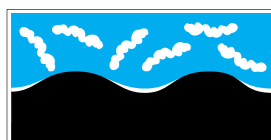
Cornering

The reinforced shoulder design improves grip for effective corner capabilities.



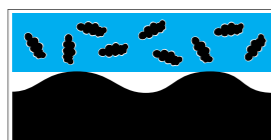
1 Special tread compound formula reduces rolling resistance and improves skid resistance.

White Carbon Black Filler

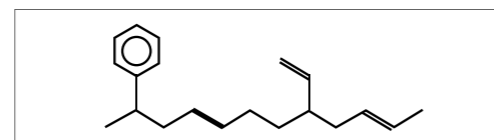


White carbon black sticks better to the body of the tire which creates less friction. This greatly reduces the tire's rolling resistance. White carbon black is more flexible making it better at absorbing shocks from road deformations and improves grip.

Carbon Black Filler



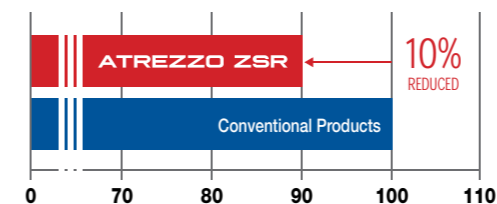
2 Main tread rubber material greatly improves hydroplaning resistance to provide you with a safer ride.



High content of Styrene Vinyl which provides great hydroplaning resistance.

ATREZZO ZSR Formula Intro

Rolling Resistance



Skid Resistance





ATREZZO ZSR

	SIZE	PR	LI	SR	XL	OD	SW	TD	RW	UTQG
						mm	mm	mm	Inch	
15	195/45R15	--	78	V	--	557	195	8	6 1/2J	340/A/A
	195/50R15	--	82	V	--	577	201	8	6J	340/A/A
16	195/40ZR16	--	80	W	XL	562	200	8.2	7J	340/A/A
	195/45R16	--	84	V	XL	582	195	8	6 1/2J	340/A/A
	205/45R16	--	87	V	XL	590	206	8.2	7J	340/A/A
	205/45R16	--	87	W	XL	590	206	8.2	7J	340/A/A
	205/45R16	--	87	Y	XL	590	206	8.2	7J	340/A/A
	205/50ZR16	--	87	W	--	612	214	8.2	6 1/2J	340/A/A
	205/55ZR16	--	91	W	--	632	214	8.3	6 1/2J	340/A/A
	215/55ZR16	--	97	W	XL	642	226	8.2	7J	340/A/A
	225/55ZR16	--	99	W	XL	654	233	8.2	7J	340/A/A
	17	215/35ZR17	--	83	W	XL	582	218	8.2	7 1/2J
215/35ZR17		--	83	Y	XL	582	218	8.2	7 1/2J	340/A/A
195/40R17		--	81	V	XL	588	200	8.2	7J	340/A/A
205/40ZR17		--	84	W	XL	596	212	8.2	7 1/2J	340/A/A
205/40ZR17		--	84	Y	XL	596	212	8.2	7 1/2J	340/A/A
215/40ZR17		--	87	W	XL	604	218	8	7 1/2J	340/A/A
215/40ZR17		--	87	Y	XL	604	218	8	7 1/2J	340/A/A
245/40ZR17		--	95	W	XL	628	248	8.2	8 1/2J	340/A/A
245/40ZR17		--	95	Y	XL	628	248	8.2	8 1/2J	340/A/A
205/45ZR17		--	88	W	XL	616	206	8.2	7J	340/A/A
205/45ZR17		--	88	Y	XL	616	206	8.2	7J	340/A/A
215/45ZR17		--	91	W	XL	626	213	8	7J	340/A/A
215/45ZR17		--	91	Y	XL	626	213	8	7J	340/A/A
225/45ZR17		--	94	W	XL	634	225	8.2	7 1/2J	340/A/A
225/45ZR17		--	94	W	XL	750	248	8.4	7 1/2J	340/A/A
225/45ZR17		--	94	Y	XL	634	225	8.2	7 1/2J	340/A/A
235/45ZR17		--	97	W	XL	644	236	8.2	8J	340/A/A
235/45ZR17		--	97	Y	XL	644	236	8.2	8J	340/A/A
245/45ZR17		--	99	W	XL	652	243	8.4	8J	340/A/A
245/45ZR17		--	99	W	XL	652	243	8.2	8J	340/A/A
245/45ZR17		--	99	Y	XL	652	243	8.2	8J	340/A/A
205/50ZR17		--	93	W	XL	638	214	8.2	6 1/2J	340/A/A
205/50ZR17		--	93	Y	XL	638	214	8.2	6 1/2J	340/A/A
215/50R17		--	95	V	XL	648	226	8.2	7J	340/A/A
215/50ZR17		--	95	W	XL	648	226	8.2	7J	340/A/A
225/50ZR17		--	98	W	XL	658	233	8.2	7J	340/A/A
225/50ZR17	--	98	Y	XL	658	233	8.2	7J	340/A/A	
215/55ZR17	--	98	W	XL	668	226	8.2	7J	340/A/A	
225/55R17	--	101	V	XL	680	233	8.2	7J	340/A/A	
225/55ZR17	--	101	W	XL	680	233	8.2	7J	340/A/A	
18	215/35ZR18	--	84	W	XL	607	218	8	7 1/2J	340/A/A
	215/35ZR18	--	84	Y	XL	607	218	8	7 1/2J	340/A/A
	225/35ZR18	--	87	W	XL	615	230	8.2	8J	340/A/A
	225/35ZR18	--	87	Y	XL	615	230	8.2	8J	340/A/A
	255/35ZR18	--	94	W	XL	635	260	8.2	9J	340/A/A
	255/35ZR18	--	94	Y	XL	635	260	8.2	9J	340/A/A
	265/35ZR18	--	97	W	XL	643	271	8.2	9 1/2J	340/A/A
	265/35ZR18	--	97	Y	XL	643	271	8.2	9 1/2J	340/A/A
	215/40R18	--	89	V	XL	629	218	8	7 1/2J	340/A/A

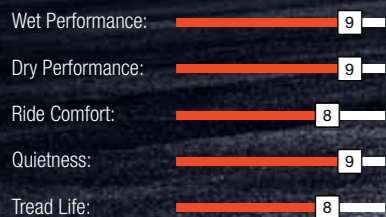
	SIZE	PR	LI	SR	XL	OD	SW	TD	RW	UTQG	
						mm	mm	mm	Inch		
18	215/40ZR18	--	89	Y	XL	629	218	8	7 1/2J	340/A/A	
	225/40ZR18	--	92	W	XL	637	230	8.2	8J	340/A/A	
	225/40ZR18	--	92	Y	XL	637	230	8.2	8J	340/A/A	
	235/40ZR18	--	95	W	XL	645	241	8.2	8 1/2J	340/A/A	
	235/40ZR18	--	95	Y	XL	645	241	8.2	8 1/2J	340/A/A	
	245/40ZR18	--	97	W	XL	653	248	8.2	8 1/2J	340/A/A	
	245/40ZR18	--	97	Y	XL	653	248	8.2	8 1/2J	340/A/A	
	215/45ZR18	--	93	W	XL	651	213	8.2	7J	340/A/A	
	215/45ZR18	--	93	Y	XL	651	213	8.2	7J	340/A/A	
	225/45ZR18	--	95	W	XL	659	225	8.2	7 1/2J	340/A/A	
	225/45ZR18	--	95	Y	XL	659	225	8.2	7 1/2J	340/A/A	
	235/45ZR18	--	98	W	XL	669	236	8.2	8J	340/A/A	
	235/45ZR18	--	98	Y	XL	669	236	8.2	8J	340/A/A	
	245/45ZR18	--	100	W	XL	677	243	8.4	8J	340/A/A	
	245/45ZR18	--	100	W	XL	677	243	8.2	8J	340/A/A	
	245/45ZR18	--	100	Y	XL	677	243	8.2	8J	340/A/A	
	255/45ZR18	--	103	W	XL	687	255	8.2	8 1/2J	340/A/A	
	255/45ZR18	--	103	Y	XL	687	255	8.2	8 1/2J	340/A/A	
	19	225/50ZR18	--	95	W	--	683	233	8.2	7J	340/A/A
		225/50ZR18	--	95	Y	--	683	233	8.2	7J	340/A/A
235/50ZR18		--	101	W	XL	693	245	8.2	7 1/2J	340/A/A	
235/50ZR18		--	101	Y	XL	693	245	8.2	7 1/2J	340/A/A	
275/30ZR19		--	96	W	XL	649	278	8.2	9 1/2J	340/A/A	
275/30ZR19		--	96	Y	XL	649	278	8.2	9 1/2J	340/A/A	
215/35ZR19		--	85	W	XL	633	218	8.2	7 1/2J	340/A/A	
215/35ZR19		--	85	Y	XL	633	218	8.2	7 1/2J	340/A/A	
225/35ZR19		--	88	W	XL	641	230	8.2	8J	340/A/A	
225/35ZR19		--	88	Y	XL	641	230	8.2	8J	340/A/A	
235/35ZR19		--	91	W	XL	647	241	8.2	8 1/2J	340/A/A	
235/35ZR19		--	91	Y	XL	647	241	8.2	8 1/2J	340/A/A	
245/35ZR19		--	93	W	XL	655	248	8.2	8 1/2J	340/A/A	
245/35ZR19		--	93	Y	XL	655	248	8.2	8 1/2J	340/A/A	
255/35ZR19		--	96	Y	XL	661	260	8.2	9J	340/A/A	
20		275/35ZR19	--	96	W	--	675	278	8.2	9 1/2J	340/A/A
	275/35ZR19	--	96	Y	--	675	278	8.2	9 1/2J	340/A/A	
	275/35ZR19	--	100	Y	XL	675	278	8.2	9 1/2J	340/A/A	
	245/40ZR19	--	98	W	XL	679	248	8.2	8 1/2J	340/A/A	
	245/40ZR19	--	98	Y	XL	679	248	8.2	8 1/2J	340/A/A	
	235/55ZR19	--	105	W	XL	741	245	8	7 1/2J	340/A/A	
	245/30ZR20	--	95	W	XL	656	248	8.2	8 1/2J	340/A/A	
	275/30ZR20	--	97	W	XL	674	278	8.2	9 1/2J	340/A/A	
	275/30ZR20	--	97	Y	XL	674	278	8.2	9 1/2J	340/A/A	
	225/35ZR20	--	90	W	XL	666	230	8.2	8J	340/A/A	
	225/35ZR20	--	90	Y	XL	666	230	8.2	8J	340/A/A	
	225/35ZR20	--	93	W	XL	666	230	8.2	8J	640/A/B	
245/35ZR20	--	95	W	XL	680	248	8.2	8 1/2J	340/A/A		
245/35ZR20	--	95	Y	XL	680	248	8.2	8 1/2J	340/A/A		
255/35ZR20	--	97	W	XL	686	260	8.2	9J	340/A/A		
255/35ZR20	--	97	Y	XL	686	260	8.2	9J	340/A/A		



ULTRA HIGH PERFORMANCE SUV TIRE

ATREZZO ZSR SUV

PERFORMANCE RATINGS:



ATREZZO ZSR SUV

Special Tread Compound

The tread formula effectively improves wet driving capabilities and improve rolling resistance for improved fuel efficiency.

Comfortable Ride

Groove pattern improves driving stability and works with the optimized variable pitch arrangement to reduce noise emissions.

Asymmetric Pattern for Balanced Performance

The asymmetric pattern design boasts two strengths; the inner sidewall is adept at draining water to increase wet performance, and outside sidewall with its large tread blocks improves grip while cornering.

High Speed Performance

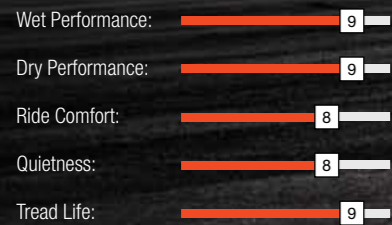
Widened tread surface design; when in contact with the ground the specially structured crown evenly distributes force to achieve precise control at high speeds.

	SIZE	PR	LI	SR	XL	OD	SW	TD	RW	UTQG
						mm	mm	mm	Inch	
18	225/55R18	--	98	V	--	705	233	8	7J	340/A/A
	235/55R18	--	100	V	--	715	245	8	7 1/2J	340/A/A
	255/55R18	--	109	V	XL	737	265	8	8J	340/A/A
	235/60R18	--	107	V	XL	739	240	8	7J	340/A/A
	255/60R18	--	112	Y	XL	763	260	8	7 1/2J	340/A/A
	255/60R18	--	112	V	XL	763	260	8	7 1/2J	340/A/A
19	225/40ZR19	--	93	Y	XL	663	230	8	8J	340/A/A
	275/40ZR19	--	105	Y	XL	703	278	8	9 1/2J	340/A/A
	225/45ZR19	--	96	Y	XL	685	225	8	7 1/2J	340/A/A
	235/45ZR19	--	99	Y	XL	695	236	7.7	8J	340/A/A
	245/45ZR19	--	98	Y	--	703	243	8	8J	340/A/A
	245/45ZR19	--	102	Y	XL	703	243	8	8J	340/A/A
	285/45ZR19	--	111	Y	XL	739	285	8	9 1/2J	340/A/A
	255/50ZR19	--	107	Y	XL	739	265	8	8J	340/A/A
	265/50ZR19	--	110	Y	XL	749	277	8	8 1/2J	340/A/A
	225/55R19	--	99	V	--	731	233	8	7J	340/A/A
	255/55ZR19	--	111	W	XL	763	265	8	8J	340/A/A
	20	315/35ZR20	--	110	Y	XL	728	320	8	11J
275/40ZR20		--	106	Y	XL	728	278	7.7	9 1/2J	340/A/A
245/45ZR20		--	103	Y	XL	728	243	8	8J	340/A/A
255/45ZR20		--	105	Y	XL	738	255	8	8 1/2J	340/A/A
265/45ZR20		--	108	Y	XL	746	266	8	9J	340/A/A
275/45ZR20		--	110	Y	XL	756	273	8	9J	340/A/A
255/50ZR20		--	109	W	XL	764	265	8	8J	340/A/A
255/50ZR20		--	109	Y	XL	764	265	8	8J	340/A/A
265/50R20		--	111	V	XL	774	277	8	8 1/2J	340/A/A
275/50ZR20		--	113	W	XL	784	284	8	8 1/2J	340/A/A
285/50R20		--	116	V	XL	794	297	8	9J	340/A/A
255/55ZR20		--	110	Y	XL	788	265	8	8J	340/A/A
275/55R20		--	117	V	XL	810	284	8	8 1/2J	340/A/A
275/60R20		--	119	V	XL	838	279	8	8J	340/A/A
21	295/35ZR21	--	107	Y	XL	739	301	7.7	10 1/2J	340/A/A
	295/40ZR21	--	111	Y	XL	769	301	8	10 1/2J	340/A/A
	275/45ZR21	--	110	Y	XL	781	273	7.7	9J	340/A/A
22	265/35ZR22	--	102	Y	XL	745	271	8	9 1/2J	340/A/A
	285/35ZR22	--	106	Y	XL	759	290	8	10J	340/A/A
	275/40ZR22	--	108	Y	XL	779	278	7.7	9 1/2J	340/A/A
	295/40ZR22	--	112	Y	XL	795	301	7.7	10 1/2J	340/A/A



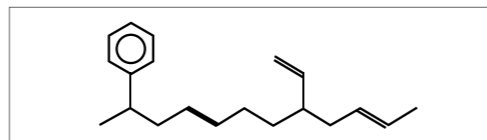
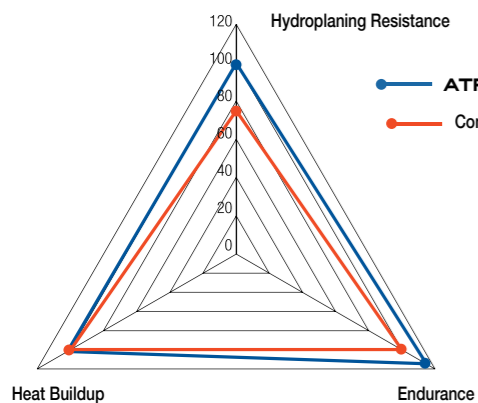
ATREZZO SVR LX

PERFORMANCE RATINGS:



The **ATREZZO SVR LX** is a premium high-performance tire designed for SUV and crossover vehicles. An advanced tread design with a sporty look, the SVR LX accentuates the appearance of your ride, while providing exceptional all-season performance, comfort, and tread life.

- Perfect balance of style, luxury, and all-season performance.
- Available in stylish 20"-24" sizes with M+S ratings for a wide range of OE and plus-size fitments.



- 1 The tread formula compounds ensure excellent wear resistance for greater fuel economy.
- 2 The specialized formula also substantially increases wet grip.



Groove Design

All grooves are slightly inclined to effectively funnel water out of the tire for improve hydroplaning resistance.



Shoulder Grooves

The variable pitch design on the shoulder grooves and the sipes improve grip and handling for all seasons. They also effectively reduce noise emissions for improved driving comfort.



SVR

Directional Tread Pattern

The uniform V-shaped tread pattern design provides excellent grip, handling, and high speed performance in both dry and wet conditions. Efficiently drains water for a safer driving experience.

Sipe Design

The unique sipe design on the shoulder provides better stability on dry and wet roads as well as effectively reduces noise emissions.

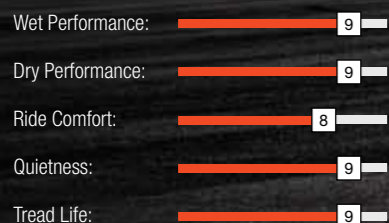


	SIZE	PR	LI	SR	XL	OD	SW	TD	RW	UTQG
						mm	mm	mm	Inch	
20	275/40R20	--	106	W	XL	728	278	9.5	9 1/2J	420/A/A
	255/45R20	--	105	V	XL	738	255	9.5	8 1/2J	420/A/A
	275/45R20	--	110	V	XL	756	273	9.5	9J	420/A/A
	295/45R20	--	114	V	XL	774	296	9.5	10J	420/A/A
	265/50R20	--	111	V	XL	774	277	9.5	8 1/2J	420/A/A
	285/50R20	--	116	V	XL	794	297	9.5	9J	420/A/A
	305/50R20	--	120	V	XL	814	316	9.5	9 1/2J	420/A/A
	275/55R20	--	117	V	XL	810	284	9.5	8 1/2J	420/A/A
22	275/60R20	--	119	S	XL	838	279	9.5	8J	420/A/A
	255/30R22	--	95	V	XL	713	260	9.5	9J	420/A/A
	265/35R22	--	102	W	XL	745	271	9.5	9 1/2J	420/A/A
	265/40R22	--	106	V	XL	771	271	9.5	9 1/2J	420/A/A
	305/40R22	--	114	V	XL	803	313	9.5	11J	420/A/A
24	305/45R22	--	118	V	XL	833	303	9.5	10J	420/A/A
	295/35R24	--	110	V	XL	816	301	9.5	10 1/2J	420/A/A
	305/35R24	--	112	V	XL	824	313	9.5	11J	420/A/A
	285/40R24	--	112	V	XL	838	290	9.5	10J	420/A/A
	295/40R24	--	114	V	XL	846	301	9.5	10 1/2J	420/A/A



ATREZZO SVR LX+

PERFORMANCE RATINGS:



Excellent High Speed Performance

Symmetric tread pattern design improves high-speed acceleration. Central rib pattern improves upon high-speed stability for a more comfortable drive.



Wet Application Pattern Design

Four main grooves are designed to effectively drain water. The groove and sipe designs running from the shoulder to the center of the tread effectively break through water film making it perfect for wet road conditions.



Improved Stability

The three-dimensional groove design located on the tread block edges improve tread block rigidity and driving stability.



Extended Service Life

The ground contact force on the tire has been designed to distribute more evenly ensuring greater driving stability and promoting even wear.



Reduced Noise Emissions

An optimized tread pitch arrangement significantly reduces noise emissions.

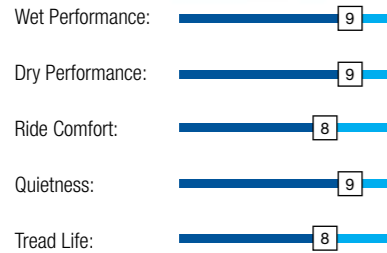
The widening groove design extending from the center to the shoulder effectively disrupts noise frequencies to reduce noise emissions.

	SIZE	PR	LI	SR	XL	OD	SW	TD	RW	UTQG
						mm	mm	mm	Inch	
20	275/40R20	--	106	V	XL	728	278	9.5	9 1/2J	420/A/A
	255/45R20	--	105	V	XL	738	255	9.5	8 1/2J	420/A/A
	275/45R20	--	110	V	XL	756	273	9.5	9J	420/A/A
	295/45R20	--	114	V	XL	774	296	9.5	10J	420/A/A
	265/50R20	--	111	V	XL	774	277	9.5	8 1/2J	420/A/A
	285/50R20	--	116	V	XL	794	297	9.5	9J	420/A/A
	305/50R20	--	120	V	XL	814	316	9.5	9 1/2J	420/A/A
	275/55R20	--	117	V	XL	810	284	9.5	8 1/2J	420/A/A
22	275/60R20	--	119	H	XL	838	279	9.5	8J	420/A/A
	235/30ZR22	--	90	W	XL	701	241	8.2	8 1/2J	420/A/A
	245/30ZR22	--	92	W	XL	707	248	8.2	8 1/2J	420/A/A
	255/30ZR22	--	95	W	XL	713	260	9.5	9J	420/A/A
	265/35ZR22	--	102	W	XL	745	271	9.5	9 1/2J	420/A/A
	265/40R22	--	106	V	XL	771	271	9.5	9 1/2J	420/A/A
24	305/40R22	--	114	V	XL	803	313	9.5	11J	420/A/A
	305/45R22	--	118	V	XL	833	303	9.5	10J	420/A/A
	295/35R24	--	110	V	XL	816	301	9.5	10 1/2J	420/A/A
	305/35R24	--	112	V	XL	824	313	9.5	11J	420/A/A



ATREZZO SVA1

PERFORMANCE RATINGS:



Asymmetrical Tread Pattern:
Provides excellent cornering stability while maintaining superior wet traction.

Groove Design:
Efficiently drains water for safer driving on wet roads.



Shoulder Groove Design:
Wave-like design on the shoulder helps reduce noise emissions and increases cornering capabilities.

	SIZE	PR	LI	SR	XL	OD	SW	TD	RW	UTQG
						mm	mm	mm	Inch	
15	195/45R15	--	78	V	--	557	195	8	6 1/2J	340/A/A
	195/50R15	--	82	V	--	577	201	8	6J	340/A/A
	195/55R15	--	85	V	--	595	201	8	6J	340/A/A
16	195/45R16	--	84	V	XL	582	195	8	6 1/2J	340/A/A
	205/45R16	--	87	V	XL	590	206	8	7J	340/A/A
	205/45ZR16	--	87	W	XL	590	206	8	7J	340/A/A
	195/50R16	--	88	V	XL	602	201	8	6J	340/A/A
	205/50R16	--	87	V	--	612	214	8	6 1/2J	340/A/A
	205/55R16	--	91	V	--	632	214	8	6 1/2J	340/A/A
	205/55R16	--	94	V	XL	632	214	8	6 1/2J	340/A/A
	205/55R16	--	91	W	--	632	214	8	6 1/2J	340/A/A
17	215/55ZR16	--	97	W	XL	642	226	8.2	7J	340/A/A
	225/55ZR16	--	99	W	XL	654	233	8.2	7J	340/A/A
	195/40R17	--	81	H	XL	588	200	8	7J	340/A/A
	195/40ZR17	--	81	W	XL	588	200	8	7J	340/A/A
	205/40ZR17	--	84	W	XL	596	212	8	7 1/2J	340/A/A
	215/40ZR17	--	87	W	XL	604	218	8	7 1/2J	340/A/A
	245/40ZR17	--	95	W	XL	628	248	8.2	8 1/2J	340/A/A
	195/45R17	--	85	V	XL	608	195	8	6 1/2J	340/A/A
205/45ZR17	--	88	W	XL	616	206	8	7J	340/A/A	

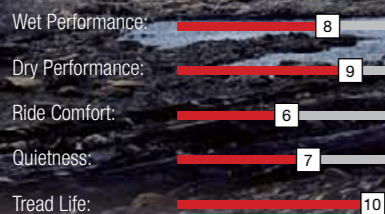
	SIZE	PR	LI	SR	XL	OD	SW	TD	RW	UTQG	
						mm	mm	mm	Inch		
17	215/45ZR17	--	91	W	XL	626	213	8.2	7J	340/A/A	
	225/45ZR17	--	94	W	XL	634	225	8.2	7 1/2J	340/A/A	
	235/45ZR17	--	97	W	XL	644	236	8.2	8J	340/A/A	
	245/45ZR17	--	99	W	XL	652	243	8.2	8J	340/A/A	
	205/50ZR17	--	93	W	XL	638	214	8	6 1/2J	340/A/A	
	215/50R17	--	95	V	XL	648	226	8.2	7J	340/A/A	
	215/50R17	--	95	W	XL	648	226	8.2	7J	340/A/A	
	225/50ZR17	--	98	W	XL	658	233	8.2	7J	340/A/A	
	235/50ZR17	--	96	W	--	668	245	8.2	7 1/2J	340/A/A	
	215/55ZR17	--	98	W	XL	668	226	8.2	7J	340/A/A	
	225/55R17	--	101	V	XL	680	233	8.2	7J	340/A/A	
	225/55ZR17	--	101	W	XL	680	233	8.2	7J	340/A/A	
18	235/55R17	--	103	H	XL	690	245	8.2	7 1/2J	340/A/A	
	235/55ZR17	--	103	W	XL	690	245	8.2	7 1/2J	340/A/A	
	215/35ZR18	--	84	W	XL	607	218	8	7 1/2J	340/A/A	
	255/35ZR18	--	94	W	XL	635	260	8.2	9J	340/A/A	
	265/35ZR18	--	97	Y	XL	643	271	8.2	9 1/2J	340/A/A	
	215/40ZR18	--	89	W	XL	629	218	8	7 1/2J	340/A/A	
	225/40ZR18	--	92	W	XL	637	230	8.2	8J	340/A/A	
	235/40ZR18	--	95	W	XL	645	241	8.2	8 1/2J	340/A/A	
	245/40ZR18	--	97	Y	XL	653	248	8.2	8 1/2J	340/A/A	
	225/45ZR18	--	95	W	XL	659	225	8.2	7 1/2J	340/A/A	
	235/45R18	--	98	V	XL	669	236	8.2	8J	340/A/A	
	245/45ZR18	--	100	W	XL	677	243	8.2	8J	340/A/A	
	255/45ZR18	--	103	W	XL	687	255	8.5	8 1/2J	340/A/A	
	235/50ZR18	--	97	W	--	693	245	8.2	7 1/2J	340/A/A	
	245/50ZR18	--	104	Y	XL	703	253	8.2	7 1/2J	340/A/A	
	225/55R18	--	98	V	--	705	233	8.2	7J	340/A/A	
	19	265/30ZR19	--	93	Y	XL	643	271	8.2	9 1/2J	340/A/A
		275/30ZR19	--	96	Y	XL	649	278	8.2	9 1/2J	340/A/A
225/35ZR19		--	88	W	XL	641	230	8.2	8J	340/A/A	
235/35ZR19		--	91	W	XL	647	241	8.2	8 1/2J	340/A/A	
245/35ZR19		--	93	W	XL	655	248	8.2	8 1/2J	340/A/A	
255/35ZR19		--	96	W	XL	661	260	8.2	9J	340/A/A	
275/35ZR19		--	96	Y	--	675	278	8.2	9 1/2J	340/A/A	
275/35ZR19		--	100	W	XL	675	278	8.2	9 1/2J	340/A/A	
225/40ZR19		--	93	Y	XL	663	230	8.2	8J	340/A/A	
235/40R19		--	96	V	XL	671	241	8.2	8 1/2J	340/A/A	
245/40ZR19		--	98	Y	XL	679	248	8.2	8 1/2J	340/A/A	
255/40R19		--	100	H	XL	687	260	8.2	9J	340/A/A	
20	275/40ZR19	--	105	Y	XL	703	278	8.5	9 1/2J	340/A/A	
	245/45ZR19	--	98	W	--	703	243	8.2	8J	340/A/A	
	275/45ZR19	--	108	Y	XL	731	273	8.5	9J	340/A/A	
	255/50R19	--	107	V	XL	739	265	8.5	8J	340/A/A	
	225/30ZR20	--	85	Y	XL	644	230	8.2	8J	340/A/A	
	235/30ZR20	--	88	W	XL	650	241	8.2	8 1/2J	340/A/A	
	275/30ZR20	--	97	W	XL	674	278	8.2	9 1/2J	340/A/A	
	225/35ZR20	--	90	W	XL	666	230	8.2	8J	340/A/A	
	245/35ZR20	--	95	W	XL	680	248	8.2	8 1/2J	340/A/A	
	255/35ZR20	--	97	W	XL	686	260	8.2	9J	340/A/A	
	245/40ZR20	--	99	Y	XL	704	248	8.2	8 1/2J	340/A/A	
	275/40ZR20	--	106	W	XL	728	278	8.5	9 1/2J	340/A/A	
22	245/45ZR20	--	103	W	XL	728	243	8.2	8J	340/A/A	
	255/45ZR20	--	105	W	XL	738	255	8.5	8 1/2J	340/A/A	
	265/50R20	--	111	V	XL	774	277	8.5	8 1/2J	340/A/A	
	265/50R20	--	111	W	XL	774	277	8.5	8 1/2J	340/A/A	
	245/30ZR22	--	92	W	XL	707	248	8.2	8 1/2J	340/A/A	



TERRAMAX

M/T

PERFORMANCE RATINGS:

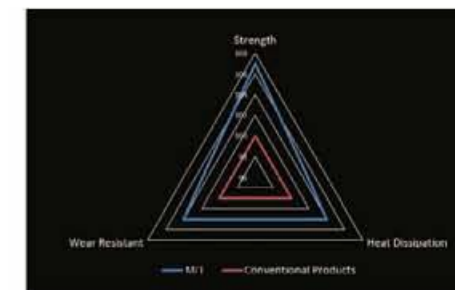
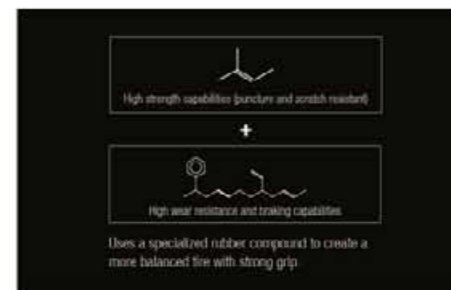
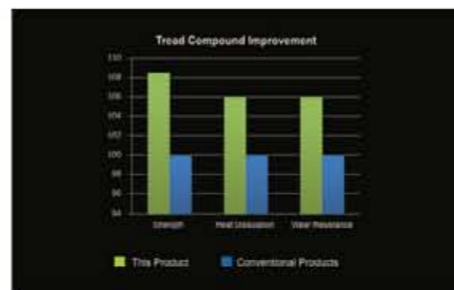


Strong Carcass

The three layer carcass design significantly improves tire strength for better resistance to impacts.



- **Staggered shoulder blocks** improve traction and climbing capability.
- **Z-Shaped Grooves**
The z-shaped grooves between blocks is designed specifically to enhance off-road driving capabilities by improving grip and climbing ability.
- **Grooves**
Deepened grooves allows mud to easily be discharged from the tread at both high and low speeds. The design also offers better grip when traveling on rocky or rugged roads.
- **Shoulder Design**
Large blocks on the shoulder vastly enhance handling on muddy and rock roads.
- **Safety**
The shield pattern which extends from the sidewall protects the sidewall from abrasions and increase traction on mud roads. The carcass is designed with three layers of polyester fabric to make it rugged and resistant to strong impacts.



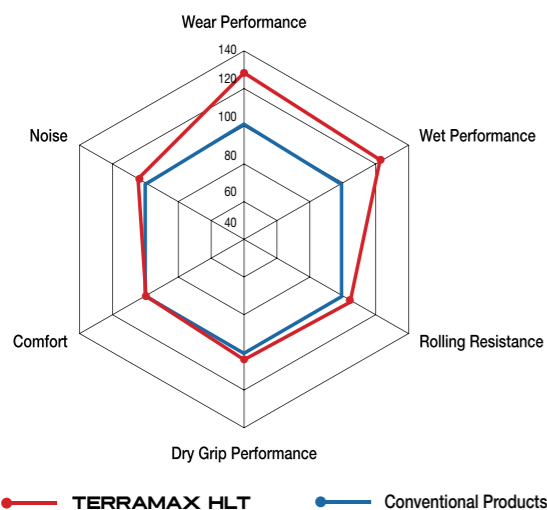
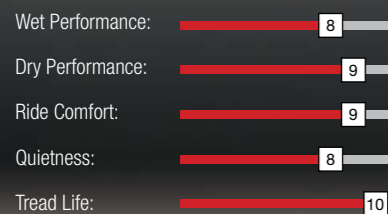
	SIZE	PR	LI	SR	XL	OD	SW	TD	RW	UTQG
						mm	mm	mm	Inch	
15	LT235/75R15	6PR	104/101	Q	--	739	235	15.3	6 1/2J	--
	30x9.50R15LT	6PR	104	Q	--	756	240	15.3	7 1/2J	--
	31x10.50R15LT	6PR	109	Q	--	781	268	15.3	8 1/2J	--
	33x12.50R15LT	6PR	108	Q	--	832	318	15.3	10J	--
	35x12.50R15LT	6PR	113	Q	--	883	318	15.3	10J	--
16	LT245/75R16	10PR	120/116	Q	--	780	248	15.3	7J	--
	LT265/75R16	10PR	123/120	Q	--	810	267	15.3	7 1/2J	--
	LT235/85R16	10PR	120/116	Q	--	812	235	15.3	6 1/2J	--
17	LT285/70R17	10PR	121/118	Q	--	838	292	15.5	8 1/2J	--
	LT265/70R17	10PR	121/118	Q	--	810	272	15.5	8J	--
	33x12.50R17LT	8PR	114	Q	--	832	318	16.3	10J	--
18	35x12.50R17LT	10PR	121	Q	--	883	318	16.3	10J	--
	33x12.50R18LT	10PR	118	Q	--	832	318	16.3	10J	--
	35x12.50R18LT	10PR	123	Q	--	883	318	16.7	10J	--
20	35x12.50R18LT	10PR	123	K	--	883	318	16.7	10J	--
	LT305/55R20	10PR	121/118	Q	--	850	316	16.3	9 1/2J	--
	33x12.50R20LT	10PR	114	Q	--	832	318	16.3	10J	--
	35x12.50R20LT	10PR	121	Q	--	883	318	16.3	10J	--



TERRAMAX

HLT

PERFORMANCE RATINGS:



High-Performance Tread Compound

A specialized mixture of SBR solution and ultra-wearable carbon black particles allows this tire to boast a longer life while also providing improved wet skid resistance and wear resistance.



- Large Block Face**
The large block face design effectively increases the ground contact area of the tire to improve overall handling, wear and grip performance.
- Four Extra Wide Main Grooves**
Four widened main grooves enhance directional stability and water drainage to allow for an excellent handling and traction on wet and dry roads.
- Pattern Pitch Optimization**
The pattern pitch arrangement effectively reduces noise to create a quieter driving experience.

	SIZE	PR	LI	SR	XL	OD	SW	TD	RW	UTQG
						mm	mm	mm	Inch	
15	235/75R15	--	105	T	--	733	235	9	6 1/2J	600/A/A
	215/70R16	--	100	H	--	708	221	9	6 1/2J	600/A/A
	235/70R16	--	106	T	--	736	240	9	7J	600/A/A
	245/70R16	--	107	T	--	750	248	9	7J	600/A/A
	255/70R16	--	111	T	--	764	260	9	7 1/2J	600/A/A
16	265/70R16	--	112	T	--	778	272	9	8J	600/A/A
	245/75R16	--	111	T	--	774	248	9	7J	600/A/A
	265/75R16	--	116	T	--	804	267	9	7 1/2J	600/A/A
	LT225/75R16	10PR	115/112	R	--	744	223	11.5	6J	--
	LT245/75R16	10PR	120/116	R	--	774	248	11.5	7J	--
	LT265/75R16	10PR	123/120	S	--	804	267	11.5	7 1/2J	--
	LT215/85R16	10PR	115/112	R	--	772	216	11.5	6J	--
	LT235/85R16	10PR	120/116	R	--	806	235	11.5	6 1/2J	--
	225/65R17	--	102	H	--	724	228	9	6 1/2J	600/A/A
	235/65R17	--	104	T	--	738	240	9	7J	600/A/A
17	245/65R17	--	107	T	--	750	248	9	7J	600/A/A
	265/65R17	--	112	S	--	776	272	9	8J	600/A/A
	245/70R17	--	110	T	--	776	248	9	7J	600/A/A
	265/70R17	--	115	T	--	804	272	9	8J	600/A/A
	LT245/70R17	10PR	119/116	S	--	776	248	11.5	7J	--
	LT265/70R17	10PR	121/118	S	--	804	272	11.5	8J	--
	235/75R17	--	109	T	--	784	235	9	6 1/2J	600/A/A
	LT245/75R17	10PR	121/118	S	--	800	248	11.5	7J	--
	LT235/80R17	10PR	120/117	R	--	808	235	11.5	6 1/2J	--
	235/55R18	--	100	V	--	715	245	9	7 1/2J	600/A/A
18	255/55R18	--	109	V	XL	737	265	9	8J	600/A/A
	235/60R18	--	103	H	--	739	240	9	7J	600/A/A
	235/60R18	--	103	V	--	739	240	9	7J	600/A/A
	245/60R18	--	105	H	--	751	248	9	7J	600/A/A
	265/60R18	--	110	H	--	775	272	9	8J	600/A/A
	235/65R18	--	106	H	--	763	240	9	7J	600/A/A
	255/65R18	--	111	S	--	789	260	9	7 1/2J	600/A/A
	275/65R18	--	116	T	--	815	279	9	8J	600/A/A
	LT275/65R18	10PR	123/120	S	--	815	279	11.5	8J	--
	265/70R18	--	116	T	--	829	272	9	8J	600/A/A
	LT265/70R18	10PR	124/121	S	--	829	272	11.5	8J	--
	LT275/70R18	10PR	125/122	S	--	843	279	11.5	8J	--
	19	235/55R19	--	101	H	--	741	245	9	7 1/2J
245/55R19		--	103	S	--	753	253	9	7 1/2J	600/A/A
255/60R19		--	109	H	--	789	260	9	7 1/2J	600/A/A
20	245/50R20	--	102	H	--	754	253	9	7 1/2J	600/A/A
	255/50R20	--	105	H	--	764	265	9	8J	600/A/A
	265/50R20	--	107	H	--	774	277	9	8 1/2J	600/A/A
	265/50R20	--	107	V	--	774	277	9	8 1/2J	600/A/A
	235/55R20	--	102	H	--	766	245	9	7 1/2J	600/A/A
	255/55R20	--	107	H	--	788	265	9	8J	600/A/A
	275/55R20	--	117	T	XL	810	284	9	8 1/2J	600/A/A
	245/60R20	--	107	H	--	802	248	9	7J	600/A/A
	275/60R20	--	115	T	--	838	279	9	8J	600/A/A
LT275/65R20	10PR	126/123	S	--	866	279	11.5	8J	--	

Outlined White Letter *Black Sidewall

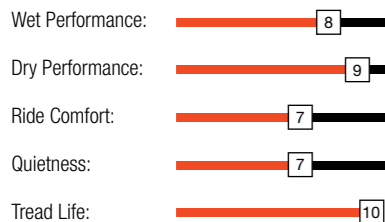


TERRAMAX



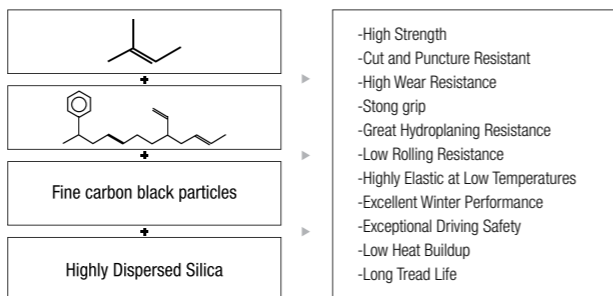
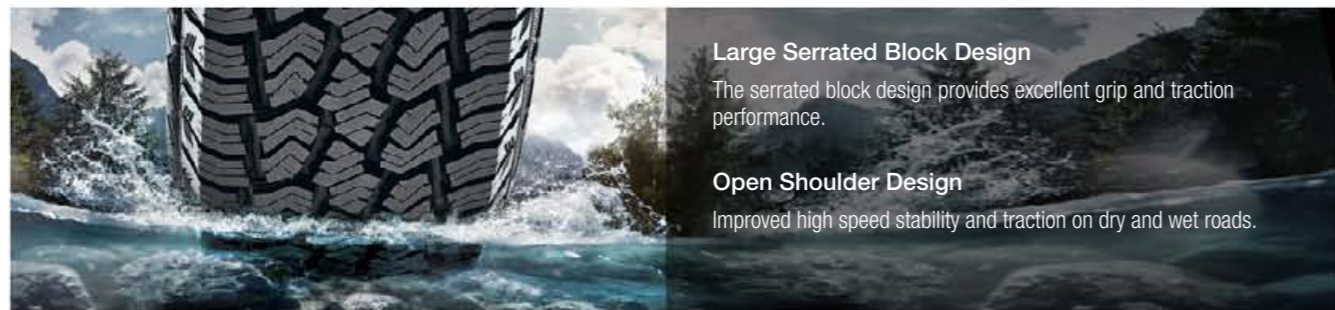
The NEW Terramax A/T 3PMS is designed to deliver superior traction for SUVs, pickups and vans both off and on the road. The NEW Terramax A/T 3PMS provides the same exceptional handling, on-and-off-road stability and quiet, comfortable ride as the original Terramax A/T with the added bonus that it is winter tire tested and approved!

PERFORMANCE RATINGS:



The **TERRAMAX A/T** is designed to deliver superior traction for SUVs, pickups and vans both off and on road. The A/T provides exceptional handling and on-and-off-road stability while maintaining a comfortable ride.

- Aggressive open shoulder tread design expels water, snow, slush and mud for optimum traction in all terrain conditions.
- Solid center rib provides superior comfort and control.
- Extra deep tread sipes at varying angles improves comfort without sacrificing traction.



TERRAMAX A/T

Downard Claw-like Shoulder Design

Domineering style that effectively dissipates heat when driving long distances and at high speeds.

Sidewall Rim Protector

A shield design protects the alloy rims from collisions, impacts, and supports the sidewall.

Three-dimensional Peak Sidewall Design

Strengthens the sidewall to improve abrasion resistance.



Aggressive Open Shoulder Tread design: efficiently expels snow, water, slush, and mud for optimum traction in all-terrain conditions.



Multi-directional Sipe System: Extra deep tread sipes at varying angles improve comfort without sacrificing traction.



Solid Center Rib: Provides superior comfort and handling.



TERRAMAX A/T

	SIZE	PR	LI	SR	XL	OD	SW	TD	RW	UTQG
						mm	mm	mm	Inch	
15	235/70R15	--	103	S	--	711	240	10.5	7J	500/A/B
	265/70R15	--	112	S	--	753	272	10.5	8J	500/A/B
	215/75R15	--	100	S	--	703	216	10	6J	500/A/B
	235/75R15	--	109	S	XL	733	235	10.5	6 1/2J	500/A/B
	LT215/75R15	6PR	100/97	R	--	703	216	12.5	6J	--
	LT235/75R15	6PR	104/101	R	--	733	235	13	6 1/2J	--
	225/75R15C	6PR	110/108	S	--	719	223	12.5	6J	--
	31x10.50R15LT	6PR	109	S	--	775	268	13	8 1/2J	--
	16	235/70R16	--	106	S	--	736	240	10.5	7J
245/70R16		--	107	S	--	750	248	10.5	7J	500/A/B
265/70R16		--	112	T	--	778	272	10.5	8J	500/A/B
275/70R16		--	114	S	--	792	279	10.5	8J	500/A/B
LT245/70R16		8PR	113/110	S	--	750	248	13	7J	--
245/75R16		--	111	S	--	774	248	10.5	7J	500/A/B
265/75R16		--	116	S	--	804	267	10.5	7 1/2J	500/A/B
LT225/75R16		10PR	115/112	S	--	744	223	13	6J	--
LT245/75R16		10PR	120/116	S	--	774	248	13	7J	--
LT265/75R16		10PR	123/120	S	--	804	267	13	7 1/2J	--
LT285/75R16		10PR	126/123	R	--	834	286	13	8J	--
LT235/85R16		10PR	120/116	R	--	806	235	13	6 1/2J	--
205R16C		8PR	110/108	Q	--	736	208	12.5	6J	--

	SIZE	PR	LI	SR	XL	OD	SW	TD	RW	UTQG	
						mm	mm	mm	Inch		
17	235/65R17	--	104	S	--	738	240	10.5	7J	500/A/B	
	245/65R17	--	107	S	--	750	248	10.5	7J	500/A/B	
	265/65R17	--	112	S	--	776	272	10.5	8J	500/A/B	
	275/65R17	--	115	S	--	790	279	10.5	8J	500/A/B	
	245/70R17	--	110	T	--	776	248	10.5	7J	500/A/B	
	265/70R17	--	115	S	--	804	272	10.5	8J	500/A/B	
	LT245/70R17	10PR	119/116	S	--	776	248	13	7J	--	
	LT265/70R17	10PR	121/118	S	--	804	272	13	8J	--	
	LT285/70R17	10PR	121/118	R	--	832	292	13	8 1/2J	--	
	LT245/75R17	10PR	121/118	S	--	800	248	13	7J	--	
	LT235/80R17	10PR	120/117	R	--	808	235	13	6 1/2J	--	
	18	265/60R18	--	110	T	--	775	272	10.5	8J	--
		LT285/60R18	8PR	118/115	S	--	799	292	13	8 1/2J	--
LT325/60R18		10PR	124/121	R	--	847	331	13	9 1/2J	--	
265/65R18		--	114	T	--	801	272	10.5	8J	500/A/B	
275/65R18		--	116	T	--	815	279	10.5	8J	500/A/B	
LT275/65R18		10PR	123/120	R	--	815	279	13	8J	--	
LT305/65R18		10PR	124/121	RS	--	853	311	13	9J	--	
LT265/70R18		10PR	124/121	R	--	829	272	13	8J	--	
LT275/70R18		10PR	125/122	R	--	843	279	13	8J	--	
20		265/50R20	--	111	T	XL	774	277	10.5	8 1/2J	500/A/B
	275/55R20	--	117	T	XL	810	284	10.5	8 1/2J	500/A/B	
	LT275/55R20	10PR	120/117	S	--	810	284	13	8 1/2J	--	
	LT305/55R20	10PR	121/118	R	--	844	316	13	9 1/2J	--	
	275/60R20	--	115	T	--	838	279	10.5	8J	500/A/B	
	LT265/60R20	10PR	121/118	R	--	826	272	13	8J	--	
	LT275/60R20	10PR	123/120	R	--	838	279	13	8J	--	
	LT325/60R20	10PR	126/123	R	--	898	331	13	9 1/2J	--	
	LT275/65R20	10PR	126/123	R	--	866	279	13	8J	--	

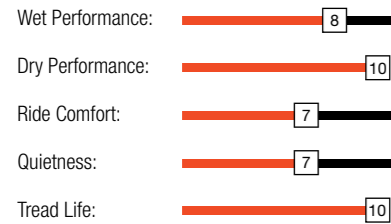


TERRAMAX

AT-M



PERFORMANCE RATINGS:



Traction Performance

Widened running surface ensures superior traction performance in all types of road surfaces.



Climbing Performance

Tread blocks maintain a staggered bite to improve traction and climbing ability.

Efficient Self-Cleaning Performance

Widened shoulder grooves and nodules within the tread grooves effectively eject mud, sand, gravel, and other debris to improve grip.



Strong Sidewall

Lengthened tread shoulder employs a multi-layered protruding design that improves strength and prevents damage to the carcass, allowing for a safe off-roading experience.

	SIZE	PR	LI	SR	XL	OD	SW	TD	RW	UTQG
						mm	mm	mm	Inch	
15	31x10.50R15LT	6PR	109	S	--	775	268	13	8 1/2J	--
16	245/70R16	--	107	S	--	750	248	10.5	7J	500/A/B
	265/70R16	--	112	T	--	778	272	10.5	8J	500/A/B
17	265/65R17	--	112	S	--	776	272	10.5	8J	500/A/B
18	265/60R18	--	110	T	--	775	272	10.5	8J	500/A/B
20	265/50R20	--	111	T	XL	774	277	10.5	8 1/2J	500/A/B
	275/55R20	--	117	T	XL	810	284	10.5	8 1/2J	500/A/B

Outlined White Letter *Raised White Letter

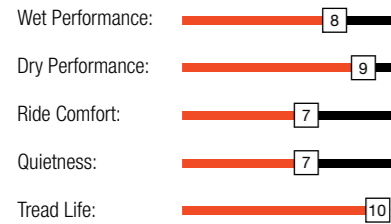


TERRAMAX

AT4S



PERFORMANCE RATINGS:



Shoulder Edge Design

The trapezoidal claw design improves traction in snow and mud, enhances shoulder heat dissipation, and strengthens overall tire durability.



Jagged Edge Tread Block

The trapezoidal claw design improves traction in snow and mud, enhances shoulder heat dissipation, and strengthens overall tire durability.



Zigzag Groove Pattern

The central zigzag tread block provides outstanding grip and traction performance.



Open Shoulder and Anti-Stone Lodging Design

The open shoulder design increases stability and traction when turning at high speeds in both dry and wet weather. The anti-stone lodging design effectively discharges stones, withstands harsh road conditions, and protects the tread from damage.

	SIZE	PR	LI	SR	XL	OD	SW	TD	RW	UTQG
						mm	mm	mm	Inch	
15	235/75R15	--	109	S	XL	733	235	10.5	6 1/2J	500/A/B
	31x10.50R15LT	6PR	109	S	--	775	268	13	8 1/2J	--
16	235/70R16	--	106	S	--	736	240	10.5	7J	500/A/B
	265/70R16	--	112	T	--	778	272	10.5	8J	500/A/B
	245/75R16	--	111	S	--	774	248	10.5	7J	500/A/B
	265/75R16	--	116	S	--	804	267	10.5	7 1/2J	500/A/B
	LT225/75R16	10PR	115/112	S	--	744	223	13	6J	--
	LT245/75R16	10PR	120/116	S	--	774	248	13	7J	--
	LT265/75R16	10PR	123/120	S	--	804	267	13	7 1/2J	--
	LT285/75R16	8PR	122/119	R	--	834	286	13	8J	--
	LT285/75R16	10PR	126/123	S	--	834	286	13	8J	--
	LT235/85R16	10PR	120/116	S	--	806	235	13	6 1/2J	--
17	245/65R17	--	107	S	--	750	248	10.5	7J	500/A/B
	265/65R17	--	112	S	--	776	272	10.5	8J	500/A/B
	265/70R17	--	115	S	--	804	272	10.5	8J	500/A/B
	LT245/70R17	10PR	119/116	S	--	776	248	13	7J	--
	LT265/70R17	10PR	121/118	S	--	804	272	13	8J	--
	LT285/70R17	8PR	121/118	R	--	832	292	13	8 1/2J	--
	LT285/70R17	10PR	121/118	S	--	832	292	13	8 1/2J	--
	LT245/75R17	10PR	121/118	S	--	800	248	13	7J	--
18	LT235/80R17	10PR	120/117	R	--	808	235	13	6 1/2J	--
	275/65R18	--	116	T	--	815	279	10.5	8J	500/A/B
	LT275/65R18	10PR	123/120	S	--	815	279	13	8J	--
	LT265/70R18	10PR	124/121	R	--	829	272	13	8J	--
20	LT275/70R18	10PR	125/122	R	--	843	279	13	8J	--
	275/55R20	--	117	T	XL	810	284	10.5	8 1/2J	500/A/B
	275/60R20	--	115	T	--	838	279	10.5	8J	500/A/B
	LT275/65R20	10PR	126/123	S	--	866	279	13	8J	--

Outlined White Letter *Black Sidewall

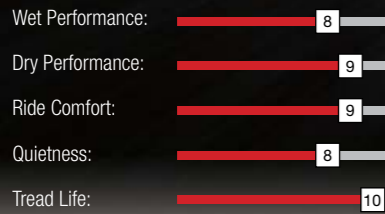


ALL-SEASON LUXURY CROSSOVER & SUV TIRE

TERRAMAX CVR



PERFORMANCE RATINGS:



The **TERRAMAX CVR** is an all-season tire specifically engineered for SUV and crossovers. The CVR delivers exceptional handling and stability for today's crossover vehicles without compromising ride comfort.

- Smooth and quiet ride for a more comfortable driving experience.
- Top all-around performance on wet and dry roads.
- Excellent handling and a stable ride, especially at high speeds.
- Durable and long lasting design.
- Suitable for off-road usage.
- H, V, W rated construction.



Large shoulder blocks and center ribs provide responsiveness and high speed stability.



Widened tread design offers a larger ground contact area which effectively improves grip performance.



Tread design offers greater driving comfort and reduces noise emissions.

Four main grooves and small gradually winding lateral grooves reduce rolling resistance and effectively drain water for improved hydroplaning resistance.

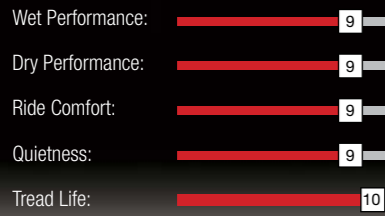
The strong casing and special tread compound increases service life, driving comfort and excellent overall driving performance.

	SIZE	PR	LI	SR	XL	OD	SW	TD	RW	UTQG
						mm	mm	mm	Inch	
15	205/70R15	--	96	H	--	669	209	8.2	6J	440/A/A
	215/75R15	--	100	S	--	703	216	9	6J	500/A/B
	225/75R15	--	102	S	--	719	223	9	6J	500/A/B
	235/75R15	--	105	T	--	733	235	9	6 1/2J	500/A/B
16	235/60R16	--	100	H	--	688	240	8.2	7J	440/A/A
	215/65R16	--	102	H	XL	686	221	8.2	6 1/2J	440/A/A
	215/70R16	--	100	H	--	708	221	9	6 1/2J	440/A/A
	235/70R16	--	106	H	--	736	240	9	7J	440/A/A
	245/70R16	--	111	H	XL	750	248	9	7J	440/A/A
	265/70R16	--	112	H	--	778	272	9	8J	440/A/A
17	245/75R16	--	111	T	--	774	248	9	7J	500/A/B
	235/55R17	--	103	V	XL	690	245	8.2	7 1/2J	420/A/A
	215/60R17	--	96	H	--	690	221	8.2	6 1/2J	440/A/A
	225/60R17	--	99	H	--	702	228	8.2	6 1/2J	440/A/A
	225/65R17	--	102	H	--	724	228	8.2	6 1/2J	440/A/A
	235/65R17	--	108	H	XL	738	240	9	7J	440/A/A
	285/65R17	--	116	T	--	802	292	9	8 1/2J	500/A/B
18	225/55R18	--	98	V	--	705	233	8.2	7J	420/A/A
	235/55R18	--	100	V	--	715	245	8.2	7 1/2J	420/A/A
	255/55R18	--	109	V	XL	737	265	9	8J	420/A/A
	235/60R18	--	103	V	--	739	240	8.2	7J	440/A/A
	285/60R18	--	116	T	--	799	292	9	8 1/2J	500/A/B
	255/70R18	--	113	T	--	815	260	9	7 1/2J	500/A/B
19	235/50ZR19	--	99	W	--	719	245	8.2	7 1/2J	420/A/A
	255/50R19	--	107	V	XL	739	265	9	8J	420/A/A
	225/55R19	--	99	V	--	731	233	8.2	7J	420/A/A
	235/55R19	--	101	V	--	741	245	8.2	7 1/2J	420/A/A
20	255/50R20	--	109	W	XL	764	265	9	8J	420/A/A



TURISMO SV57

PERFORMANCE RATINGS:



The overall stiffness of both the tread and sidewall ensures stable steering performance.



Designed for Handling Performance

Tread grip and handling sensitivity is improved through the widening of the tread grooves and narrow sipes. The main groove design is effective at quickly expelling water while the lateral grooves break through water film to prevent hydroplaning.



Mileage Focused

The special rubber compounding binds the compounds together more effectively to improve wear resistance. The symmetric tread pattern design with improved stiffness promotes even wear and reduces instances of chunking while driving at high speeds.



Noise Cancellation

Tire noise is effectively reduced through an optimized block distribution and carcass design. The groove wall design improves air flow through the tread to reduce noise emissions while driving. The stiffness of the tread allows for air to easily be pushed through to the shoulder and outside the tire.



On-Road Comfort

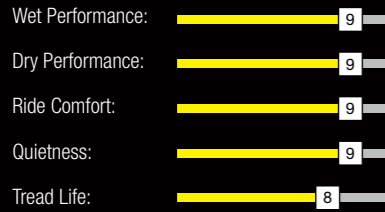
1. The FEM designed tread profile has been optimized to transition force more effectively throughout the tire.
2. The widened central and shoulder grooves, and small sipe design work together with the tire's overall tread stiffness to improve driving performance.
3. The brand new tread compounding helps deliver a more comfortable driving experience.
4. This tire category has a high aspect ratio with high stiffness improves sound dampening.

	SIZE	PR	LI	SR	XL	OD	SW	TD	RW	UTQG
						mm	mm	mm	Inch	
15	215/70R15	--	98	H	--	683	221	8.5	6 1/2J	460/A/A
16	215/65R16	--	98	H	--	686	221	8.5	6 1/2J	460/A/A
17	215/60R17	--	100	H	XL	690	221	8.5	6 1/2J	460/A/A
	235/60R17	--	102	H	--	714	240	8.5	7J	460/A/A
	215/65R17	--	99	H	--	712	221	8.5	6 1/2J	460/A/A
	225/65R17	--	102	H	--	724	228	8.5	6 1/2J	460/A/A
18	215/55R18	--	95	V	--	693	226	8.5	7J	460/A/A
	225/60R18	--	100	V	--	727	228	8.5	6 1/2J	460/A/A
	235/60R18	--	103	V	--	739	240	8.5	7J	460/A/A
	235/65R18	--	106	H	--	763	240	8.5	7J	460/A/A



TURISMO SU58

PERFORMANCE RATINGS:



Wet Performance

The inside multi-groove design enlarges the road contact area by efficiently evacuating large quantity of water. The inside block's long sipe design combined with the lateral groove easily break through water film for improved safety in wet road. The updated tread compounding drastically improves wet grip.

Dry Performance

The special tread compound further increases the bite capability of the tire for improved grip on dry roads.

Low Noise Emissions

Through simulation testing, the five pitch tread design was optimized and applied to effectively reduce noise while driving. The pattern is designed utilizing the most advanced staggered frequency technology which efficiently reduces noise emissions while driving.



Handling Performance

Handling stability is improved due to the optimization of the tread footprint and pressure distribution created through digital testing systems. An asymmetric pattern designed with larger outside pattern blocks improves lateral grip for a smoother ride at high speeds. The integrated pattern design ensures high speed driving stability.

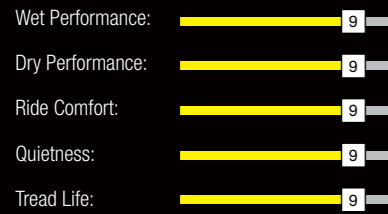


	SIZE	PR	LI	SR	XL	OD	SW	TD	RW	UTQG
						mm	mm	mm	Inch	
16	205/55ZR16	--	94	W	XL	632	214	8.2	6 1/2J	380/A/A
	215/55ZR16	--	97	W	XL	642	226	8.2	7J	380/A/A
	225/55ZR16	--	99	W	XL	654	233	8.2	7J	380/A/A
17	205/50ZR17	--	93	W	XL	638	214	8.2	6 1/2J	380/A/A
	215/55ZR17	--	98	W	XL	668	226	8.2	7J	380/A/A
	215/50ZR17	--	95	W	XL	648	226	8.2	7J	380/A/A
	215/45ZR17	--	91	W	XL	626	213	8.2	7J	380/A/A
	225/50ZR17	--	98	W	XL	658	233	8.2	7J	380/A/A
	225/45ZR17	--	94	W	XL	634	225	8.2	7 1/2J	380/A/A
	225/55ZR17	--	101	W	XL	680	233	8.2	7J	380/A/A
	235/45ZR17	--	97	W	XL	644	236	8.2	8J	380/A/A
	235/50ZR17	--	100	W	XL	668	245	8.2	7 1/2J	380/A/A
	245/45ZR17	--	99	W	XL	652	243	8.2	8J	380/A/A
18	225/45ZR18	--	95	W	XL	659	225	8.2	7 1/2J	380/A/A
	225/40ZR18	--	92	W	XL	637	230	8.2	8J	380/A/A
	235/45ZR18	--	98	Y	XL	669	236	8.2	8J	380/A/A
	245/45ZR18	--	100	W	XL	677	243	8.2	8J	380/A/A
	245/40ZR18	--	97	W	XL	653	248	8.2	8 1/2J	380/A/A
	245/50ZR18	--	104	W	XL	703	253	8.2	7 1/2J	380/A/A
	255/40ZR18	--	99	W	XL	661	260	8.2	9J	380/A/A
	255/45ZR18	--	103	W	XL	687	255	8.2	8 1/2J	380/A/A
19	275/45ZR18	--	107	W	XL	705	273	8.2	9J	380/A/A
	225/45ZR19	--	96	W	XL	685	225	8.2	7 1/2J	380/A/A
RF	245/45ZR19	--	102	W	XL	703	243	8.2	8J	380/A/A
	225/55ZRF17	--	97	W	--	680	233	8.2	7J	380/A/A
	225/50ZRF17	--	94	W	--	658	233	8.2	7J	380/A/A
	225/45ZRF17	--	91	W	--	634	225	8.2	7 1/2J	380/A/A
	225/45ZRF18	--	91	W	--	659	225	8.2	7 1/2J	380/A/A
	225/40ZRF18	--	88	W	--	637	230	8.2	8J	380/A/A
	245/45ZRF18	--	96	W	--	677	243	8.2	8J	380/A/A
	245/40ZRF18	--	93	W	--	653	248	8.2	8 1/2J	380/A/A
245/50ZRF18	--	100	W	--	703	253	8.2	7 1/2J	380/A/A	



TURISMO SU59

PERFORMANCE RATINGS:

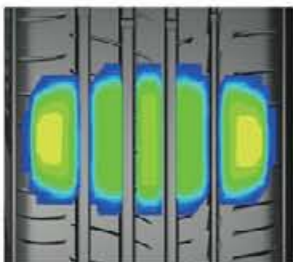


Reduced Noise Emissions

The multi-angle asymmetric pattern design off-sets tire vibration to reduce noise emissions. The tread's five pitch design has been tested to efficiently reduce noise while driving.

Handling Performance

This asymmetric pattern design has an 8% additional surface contact area and a widened outside shoulder block for greater tire stability, allowing for a smoother ride when driving at high speeds. The integrated central block design improves stability when driving at high speeds.



Longer Service Life

The tread profile design optimizes surface contact area and pressure distribution uniformity. This helps to promote even tread wear and driving stability. The high wear-resistance tread compound improves tire life.

	SIZE	PR	LI	SR	XL	OD	SW	TD	RW	UTQG
						mm	mm	mm	Inch	
18	225/55ZR18	--	102	W	XL	705	233	8	7J	420/A/A
	235/50R18	--	97	V	--	693	245	8	7 1/2J	420/A/A
	235/55ZR18	--	100	W	--	715	245	8	7 1/2J	420/A/A
	255/55R18	--	109	V	XL	737	265	8	8J	420/A/A
19	225/55ZR19	--	99	W	--	731	233	8	7J	420/A/A
	235/45ZR19	--	99	W	XL	695	236	8.5	8J	420/A/A
	235/50ZR19	--	103	W	XL	719	245	8.5	7 1/2J	420/A/A
	235/55ZR19	--	101	W	--	741	245	8.5	7 1/2J	420/A/A
	245/55R19	--	103	V	--	753	253	8	7 1/2J	420/A/A
	255/55ZR19	--	111	W	XL	763	265	8.5	8J	420/A/A
	255/50R19	--	107	V	XL	739	265	8	8J	420/A/A
	255/45ZR19	--	104	W	XL	713	255	8	8 1/2J	420/A/A
20	265/50ZR19	--	110	W	XL	749	277	8	8 1/2J	420/A/A
	235/55ZR20	--	105	W	XL	766	245	8	7 1/2J	420/A/A
	245/45ZR20	--	103	W	XL	728	243	8	8J	420/A/A
	255/55ZR20	--	110	W	XL	788	265	8	8J	420/A/A
	275/45ZR20	--	110	W	XL	756	273	8	9J	420/A/A
21	285/50ZR20	--	116	W	XL	794	297	8	9J	420/A/A
	275/45ZR21	--	110	W	XL	781	273	8	9J	420/A/A

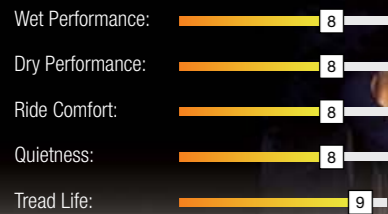


COMMERCIAL LIGHT TRUCK TIRE

COMMERCIO

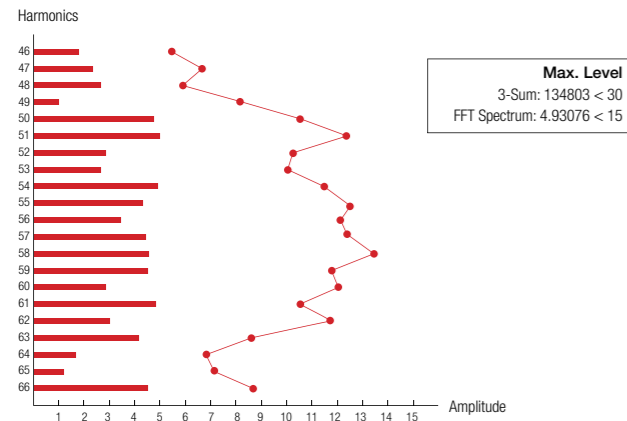
VX1

PERFORMANCE RATINGS:



The **COMMERCIO VX1** is a light truck tire engineered for commercial delivery and demanding regional applications. Featuring an enhanced compound to resist tire damage, as well as a reinforced casing to improve load capacity. The Comercio VX1 delivers exceptional mileage and tread life.

New profile design with a significantly improved carrying capacity. Strengthened tread construction, abrasion resistance and puncture resistance. Special tread formula enhances traction and improves skid resistance.



Variable Pitch Design
The tread is constructed with a variable pitch design which significantly reduces noise emissions for a more comfortable driving experience.



- 1** The new sipe design on the center blocks and shoulder improve handling and grip, dissipate heat, improve traction, and offer greater driving comfort.
- 2** Block groove angles help reduce noise emissions.



Main Groove Design
Three main grooves are designed to effectively drain water and offer greater high speed stability on wet and dry roads; improved traction and hydroplaning resistance.

Long Tread Life
The shoulder pattern design promotes uniform wear to offer greater mileage. Enhanced tread structure and tread formula improve wear and puncture resistance.

	SIZE	PR	LI	SR	XL	OD	SW	TD	RW	UTQG
						mm	mm	mm	Inch	
13	155R13C	8PR	90/88	Q	--	578	157	8.2	4.50B	--
	175R13C	8PR	97/95	S	--	608	177	8.2	5.00B	--
14	175/65R14C	6PR	90/88	T	--	584	177	8.5	5J	--
	165/70R14C	6PR	89/87	T	--	588	170	8.5	5J	--
	205/75R14C	8PR	109/107	R	--	664	203	9	5 1/2J	--
	205/75R14C	8PR	109/107	R	--	664	203	9	5 1/2J	--
15	205/65R15C	6PR	102/100	T	--	647	209	9.5	6J	--
	215/65R15C	6PR	104/102	S	--	661	221	9.5	6 1/2J	--
	195/70R15C	8PR	104/102	R	--	655	201	9.5	6J	--
	205/70R15C	8PR	106/104	R	--	669	209	9.5	6J	--
	215/70R15C	8PR	109/107	R	--	683	221	10	6 1/2J	--
	225/70R15C	8PR	112/110	R	--	697	228	10	6 1/2J	--
16	195/60R16C	6PR	99/97	H	--	640	201	9.5	6J	--
	215/60R16C	8PR	108/106	S	--	664	221	9.5	6 1/2J	--
	195/65R16C	8PR	104/102	T	--	660	201	9.5	6J	--
	205/65R16C	8PR	107/105	T	--	672	209	9.5	6J	--
	215/65R16C	8PR	109/107	R	--	686	221	9.5	6 1/2J	--
	225/65R16C	8PR	112/110	R	--	698	228	10	6 1/2J	--
	235/65R16C	8PR	115/113	R	--	712	240	10	7J	--
	215/70R16C	6PR	108/106	T	--	708	221	10	6 1/2J	--
	195/75R16C	8PR	107/105	Q	--	698	196	9.5	5 1/2J	--
	205/75R16C	8PR	110/108	R	--	714	203	9.5	5 1/2J	--
215/75R16C	8PR	113/111	R	--	728	216	10	6J	--	

Outlined White Letter *White Ring

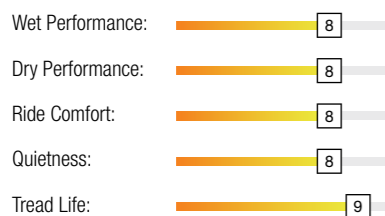


COMMERCIAL LIGHT TRUCK TIRE

COMMERCIO VX2



PERFORMANCE RATINGS:



Side Shoulder Design
Stylish design that adds a dynamic element for a greater visual effect.



- 1 Groove Design**
The three main grooves and their serrated design ensure excellent water drainage while also improving upon wet grip and impact resistance.
- 2 Tread Siping**
Ladder-like grooves located at the block joints effectively increase tire rigidity for greater handling performance and wear resistance.

	SIZE	PR	LI	SR	XL	OD	SW	TD	RW	UTQG
						mm	mm	mm	Inch	
12	155R12C	6PR	83/81	P	--	550	157	8	4.50B	--
14	185R14C	8PR	102/100	Q	--	650	188	9	5 1/2J	--
	195R14C	8PR	106/104	Q	--	666	198	9	5 1/2J	--
	205R14C	8PR	109/107	R	--	686	208	9.5	6J	--
15	185R15C	8PR	103/102	R	--	674	188	9	5 1/2J	--
	195R15C	8PR	106/104	S	--	690	198	9	5 1/2J	--

Outlined White Letter *White Ring

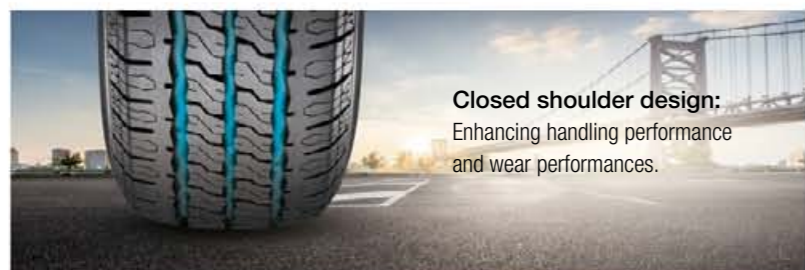
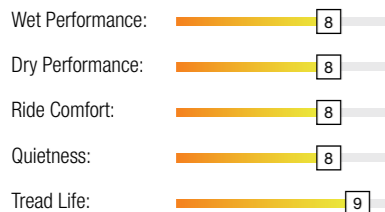


COMMERCIAL LIGHT TRUCK TIRE

COMMERCIO VX+

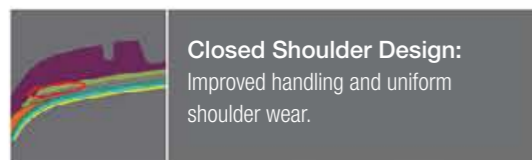


PERFORMANCE RATINGS:



Sipe Design

The sipe design is optimized for wet weather driving. Improved handling and traction in wet weather conditions.



	SIZE	PR	LI	SR	XL	OD	SW	TD	RW	UTQG
						mm	mm	mm	Inch	
12	155R12C	8PR	88/86	N	--	550	157	8	4.50B	--
	155R12C	6PR	83/81	P	--	550	157	8	4.50B	--
	155R12C	8PR	88/86	P	--	550	157	8	4.50B	--
	155R12C	6PR	83/81	P	--	550	157	8	4.50B	--
	155R12C	8PR	88/86	P	--	550	157	8	4.50B	--
13	155R13C	6PR	85/83	N	--	578	157	8	4 1/2J	--
	155R13C	8PR	90/88	N	--	578	157	8	4 1/2J	--
	165R13C	6PR	91/89	N	--	596	167	8	4 1/2J	--
	165R13C	8PR	94/93	P	--	596	167	8	4 1/2J	--
14	185R14C	8PR	102/100	Q	--	650	188	9	5 1/2J	--
	195R14C	8PR	106/104	Q	--	666	198	9	5 1/2J	--
	205R14C	8PR	109/107	R	--	686	208	9.5	6J	--
	165/70R14C	6PR	89/87	R	--	588	170	8	5J	--
15	195R15C	8PR	106/104	S	--	690	198	9	5 1/2J	--
	195/70R15C	8PR	104/102	R	--	655	201	9	6J	--
	195/70R15C	10PR	104/102	R	--	655	201	9	6J	--
	225/70R15C	8PR	112/110	R	--	697	228	9.5	6 1/2J	--
16	205/65R16C	8PR	107/105	T	--	672	209	9.5	6J	--
	195/75R16C	10PR	110/108	Q	--	698	196	9	5 1/2J	--
	215/75R16C	10PR	116/114	R	--	728	216	9.5	6J	--



SL12

The **SL12** is an all-season light truck tyre designed for delivery and demanding regional applications. Featuring a symmetrical pattern with extra wide grooves, the SL12 delivers excellent wet traction, and a quiet-comfortable ride, while the enhanced compound is engineered to deliver exceptional mileage.

PERFORMANCE RATINGS:

Wet Performance: 8

Dry Performance: 7

Ride Comfort: 8

Quietness: 9

Tread Life: 9



Full-depth microsipes
Improve heat dissipation
and traction.



Extra-wide zigzag grooves
deliver enhanced wet traction
and exceptional low speed
traction.

Wide shoulder reduces noise
emissions and improves stability.



	SIZE	PR	LI	SR	XL	OD	SW	TD	RW	UTQG
						mm	mm	mm	Inch	
14	185R14C	8PR	102/100	Q	--	650	188	9	5 1/2J	--
	195R14C	8PR	106/104	Q	--	666	198	9	5 1/2J	--
	205R14C	8PR	109/107	R	--	686	208	9.5	6J	--
	215R14C	8PR	112/110	Q	--	700	218	9.5	6J	--
15	195R15C	8PR	106/104	S	--	690	198	8.7	5 1/2J	--
	195/80R15C	8PR	107/105	L	--	693	196	9	5 1/2J	--

Black Sidewall *Both Black Sidewall & White Ring are Available

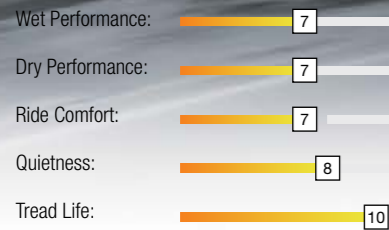


LIGHT TRUCK TIRE

EXTMILE SL15



PERFORMANCE RATINGS:



1. Shoulder groove design reduces heat buildup which improves durability.
2. Strengthened carcass ensures overall tire strenght to ensure greater load capacity.
3. Specialized tread formula greatly improves scrub and tear resistance.



Shoulder Groove Design
Reduces heat buildup which improves durability.



Close Shoulder Design
Ensures greater scrub and tear resistance.



Pipe-like Grooves
Optimizes ground pressure distribution for enhanced grip capabilities.

	SIZE	PR	LI	SR	XL	OD	SW	TD	RW	UTQG
						mm	mm	mm	Inch	
13	6.50R16LT	10PR	107/102	Q	--	750	185	10	5.50F	--

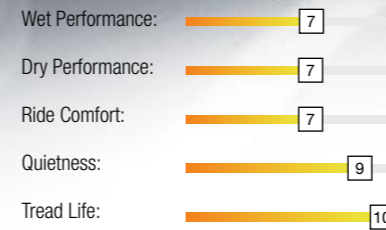


LIGHT TRUCK TIRE

EXTMILE SL16



PERFORMANCE RATINGS:



SAILUN EXTMILE SERIES

New casing design improves tire strength to ensure greater load bearing capabilities.

The new tread pattern design applies a more even grip for improved wear resistance and to promote even tread wear. Widened s-shaped grooves effectively drain water and reduce stone retention. New sidewall aesthetics added.



SL16

has noticeable improvements in wear resistance, load carrying capacity, and handling.

Strengthened Casing

New casing design improves strength for greater load bearing capabilities.

Optimized Tread Pattern Design

Even grip effectively improves wear resistance.

S-shaped Widened Grooves

Widened S-shaped Grooves Effectively drains water and reduces stone retention.

Sidewall Design

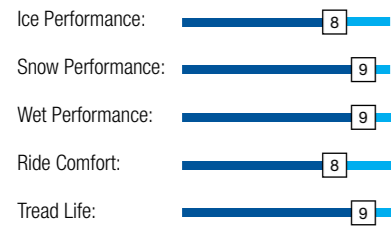
Three-dimensional design just below the shoulder improves tire aesthetics.

	SIZE	PR	LI	SR	XL	OD	SW	TD	RW	UTQG
						mm	mm	mm	Inch	
15	7.00R15LT	10PR	110/105	N	--	750	200	10	5.50F	--
16	7.00R16LT	10PR	111/107	Q	--	778	202	10.3	5.50F	--
	7.00R16LT	12PR	115/111	Q	--	778	202	10.3	5.50F	--
	7.50R16LT	14PR	122/118	N	--	805	215	10	6.00G	--



ENDURE WSL1

PERFORMANCE RATINGS:



ENDURE WSL1

Winter Snow Tire specifically designed for commercial light trucks. Specially designed formula used to conquer winter weather; provides optimal grip and stopping power on snow and ice.



Sidewall protection designed to resist against sidewall impacts and kerbing wear.



Main zigzag groove design and jagged shoulder grooves effectively drain water and snow for greater handling in wet and snowy weather conditions.



Staggered tread blocks improve handling safety while also providing greater traction.



Greater load bearing capability. Large block pattern improves load carrying capabilities and greater handling performance.



	SIZE	PR	LI	SR	XL	OD	SW	TD	RW	UTQG
						mm	mm	mm	Inch	
14	185R14C	8PR	102/100	R	--	650	188	9.6	5 1/2J	--
	195R14C	8PR	106/104	R	--	666	198	10	5 1/2J	--
	175/65R14C	6PR	90/88	T	--	584	177	9.6	5J	--
15	205/65R15C	6PR	102/100	R	--	647	209	10	6J	--
	195/70R15C	8PR	104/102	R	--	655	201	10	6J	--
	205/70R15C	8PR	106/104	R	--	669	209	10	6J	--
	215/70R15C	8PR	109/107	R	--	683	221	10	6 1/2J	--
	225/70R15C	8PR	112/110	R	--	697	228	10	6 1/2J	--
16	195/60R16C	6PR	99/97	T	--	640	201	10	6J	--
	215/60R16C	6PR	103/101	T	--	664	221	10	6 1/2J	--
	195/65R16C	8PR	104/102	R	--	660	201	10	6J	--
	205/65R16C	8PR	107/105	T	--	672	209	10	6J	--
	215/65R16C	8PR	109/107	T	--	686	221	10	6 1/2J	--
	225/65R16C	8PR	112/110	R	--	698	228	10	6 1/2J	--
	235/65R16C	10PR	121/119	R	--	712	240	10	7J	--
	185/75R16C	8PR	104/102	R	--	684	184	9.6	5J	--
	195/75R16C	8PR	107/105	R	--	698	196	10	5 1/2J	--
	205/75R16C	10PR	113/111	R	--	714	203	10	5 1/2J	--
	215/75R16C	10PR	116/114	R	--	728	216	10	6J	--
	225/75R16C	10PR	121/120	R	--	744	223	10	6J	--



STUDLESS WINTER TIRE

ICE BLAZER WSL2



PERFORMANCE RATINGS:

Ice Performance: 8

Snow Performance: 8

Dry Performance: 7

Ride Comfort: 9

Quietness: 9

The **ICE BLAZER WSL2** is a studless winter tire, providing excellent slush, snow, and wet traction in cold climate conditions, while delivering a quiet and comfortable ride on dry roads.

- Green technology: Extensive use of environmentally friendly materials that meet European REACH requirements.
- Special tread formula compounds allows the rubber to maintain flexibility in extreme cold temperatures for maximum performance potential. This improves handling and overall safety for winter weather conditions.



Unique Groove Design:

The L-shaped grooves are specifically designed enhance grip on snow, slush, and water without compromising road noise.



Outer Tread Block Design:

Optimized to improve self-cleaning capabilities while also maximizing stability and overall grip in winter weather conditions. Minimized noise emissions.



Multi-direction High Density Siping:

Engineered to maximize directional grip on snow and ice while also minimizing road noise.

	SIZE	PR	LI	SR	XL	OD	SW	TD	RW	UTQG
						mm	mm	mm	Inch	
13	175/65R13	--	80	T	--	558	177	8.7	5.00B	--
	155/70R13	--	75	T	--	548	157	8	4.50B	--
	165/70R13	--	79	T	--	562	170	8	5.00B	--
	165/70R13	--	83	T	XL	562	170	8	5.00B	--
	175/70R13	--	82	T	--	576	177	8.7	5.00B	--
	155/80R13	--	79	T	--	578	157	8	4.50B	--
14	185/60R14	--	82	T	--	578	189	8.7	5 1/2J	--
	155/65R14	--	75	T	--	558	157	8	4 1/2J	--
	175/65R14	--	82	T	--	584	177	8.7	5J	--
	185/65R14	--	86	T	--	596	189	8.7	5 1/2J	--
	165/70R14	--	81	T	--	588	170	8	5J	--
	175/70R14	--	84	T	--	602	177	8.7	5J	--
	185/70R14	--	88	T	--	616	189	8.7	5 1/2J	--
15	195/60R14	--	86	T	--	590	201	8.7	6J	--
	195/50R15	--	82	H	--	577	201	8.7	6J	--
	185/55R15	--	82	H	--	585	194	8.7	6J	--
	195/55R15	--	85	H	--	595	201	8.7	6J	--
	185/60R15	--	84	T	--	603	189	8.7	5 1/2J	--
	185/60R15	--	88	T	XL	603	189	8.7	5 1/2J	--
	195/60R15	--	88	H	--	615	201	8.7	6J	--
	165/65R15	--	81	T	--	595	170	8	5J	--
	175/65R15	--	84	T	--	609	177	8.7	5J	--
	185/65R15	--	88	T	--	621	189	8.7	5 1/2J	--
	195/65R15	--	91	T	--	635	201	8.7	6J	--
	195/65R15	--	95	T	XL	635	201	8.7	6J	--
16	205/65R15	--	94	H	--	647	209	9.1	6J	--
	205/55R16	--	91	T	--	632	214	9.1	6 1/2J	--
	205/55R16	--	91	H	--	632	214	9.1	6 1/2J	--
	205/55R16	--	94	H	XL	632	214	9.1	6 1/2J	--
	215/55R16	--	93	H	--	642	226	9.1	7J	--
	225/55R16	--	99	H	XL	654	233	9.1	7J	--
	205/60R16	--	92	H	--	652	209	9.1	6J	--
	205/60R16	--	96	H	XL	652	209	9.1	6J	--
	215/60R16	--	95	H	--	664	221	9.1	6 1/2J	--
17	215/65R16	--	98	H	--	686	221	9.1	6 1/2J	--
	225/45R17	--	94	H	XL	634	225	9.1	7 1/2J	--
	205/50R17	--	93	H	XL	638	214	9.1	6 1/2J	--
18	225/50R17	--	98	H	XL	658	233	9.1	7J	--
	245/40R18	--	97	V	XL	653	248	9.1	8 1/2J	--

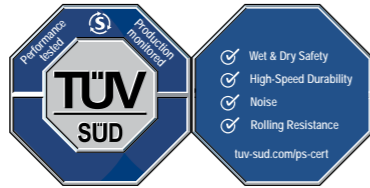
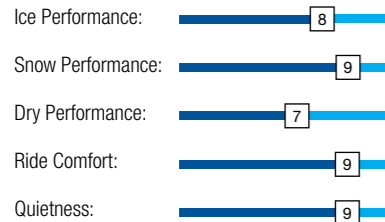


STUDLESS WINTER TIRE

ICE BLAZER ALPINE+



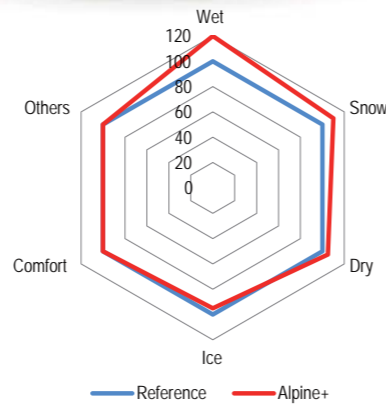
PERFORMANCE RATINGS:



ICE BLAZER ALPINE+

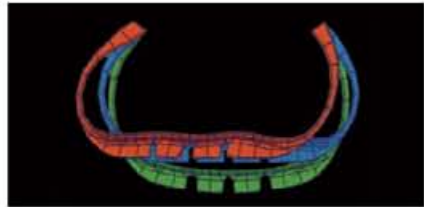
The latest generation of HP Alpine+ winter tire for cars and family sedans massively contributes on driver's safety as it provides optimum stability and control on snow, wet and dry roads.

- Advanced technology has created a tire that provides excellent traction and braking performance on snow, wet and even dry roads.
- The spear-shape pattern disperses snow and water quickly and keeps the tire in contact with the road to function perfectly in various wintery conditions.
- The functionalized 100% silica compound not only maximizes tire grip, reduces rolling resistance and wear, but also maintains flexibility in extreme cold temperatures.



V-shape Directional Pattern Design

V-shape pattern improves hydroplaning, wet and snow traction and braking.



Maximized Snow Traction

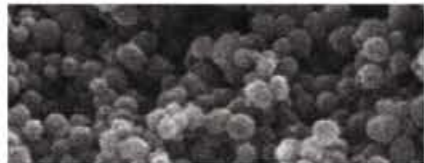
A variable pitch design, and increased lateral grooves and sipes provide greater wet and snow performance.

Optimized Pitch Sequence

Reduces generated noise and enhances anti-vibration which also promotes uniform tread wear.

Optimized Tread Profile

Improves steering response and driving comfort.



100% Silica Compound Technology

Silica compound helps improve both tire grip and offer lower rolling resistance for more efficient tread wear.

Cold Weather Compound with hardness tuned

Maintains optimum hardness and flexibility in winter weather conditions for consistent tire performance.

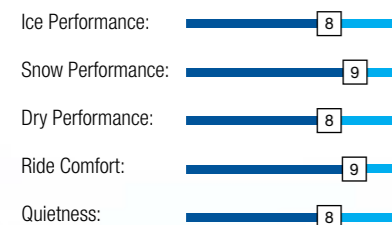
	SIZE	PR	LI	SR	XL	OD	SW	TD	RW	UTQG
						mm	mm	mm	Inch	
13	155/65R13	--	73	T	--	532	157	8	4.50B	--
	175/65R13	--	80	T	--	558	177	8	5.00B	--
	155/70R13	--	75	T	--	548	157	8	4.50B	--
	165/70R13	--	79	T	--	562	170	8	5.00B	--
	165/70R13	--	83	T	XL	562	170	8	5.00B	--
	175/70R13	--	82	T	--	576	177	8	5.00B	--
14	155/80R13	--	79	T	--	578	157	8	4.50B	--
	185/55R14	--	80	T	--	560	194	8.5	6J	--
	165/60R14	--	79	T	XL	554	170	8	5.00B,5J	--
	185/60R14	--	82	T	--	578	189	8.5	5 1/2J	--
	155/65R14	--	75	T	--	558	157	8	4.50B,4 1/2J	--
	165/65R14	--	79	T	--	570	170	8	5J	--
	175/65R14	--	82	T	--	584	177	8	5.00B,5J	--
	185/65R14	--	86	H	--	596	189	8.5	5 1/2J	--
	195/65R14	--	89	T	--	610	201	8.5	6J	--
	165/70R14	--	81	T	--	588	170	8	5.00B,5J	--
15	175/70R14	--	84	T	--	602	177	8	5.00B/5J	--
	195/50R15	--	82	H	--	577	201	8.5	6J	--
	205/50R15	--	86	H	--	587	214	8.5	6 1/2J	--
	175/55R15	--	77	T	--	573	182	8	5 1/2J	--
	185/55R15	--	82	H	--	585	194	8.5	6J	--
	195/55R15	--	85	H	--	595	201	8.5	6J	--
	195/55R15	--	89	H	XL	595	201	8.5	6J	--
	175/60R15	--	81	H	--	591	177	8	5J	--
	185/60R15	--	84	T	--	603	189	8.5	5 1/2J	--
	185/60R15	--	88	T	XL	603	189	8.5	5 1/2J	--
	195/60R15	--	88	H	--	615	201	8.5	6J	--
	205/60R15	--	91	H	--	627	209	8.5	6J	--
	175/65R15	--	84	T	--	609	177	8	5J	--
	185/65R15	--	88	H	--	621	189	8.5	5 1/2J	--
	195/65R15	--	91	T	--	635	201	8.5	6J	--
	195/65R15	--	95	T	XL	635	201	8.5	6J	--
	205/65R15	--	94	H	--	647	209	8.5	6J	--
	16	215/65R15	--	96	H	--	661	221	8.5	6 1/2J
195/45R16		--	84	H	XL	582	195	8.5	6 1/2J	--
205/45R16		--	87	H	XL	590	206	8.5	7J	--
185/55R16		--	87	H	XL	610	194	8.5	6J	--
195/55R16		--	87	H	--	620	201	8.5	6J	--
205/55R16		--	94	H	XL	632	214	8.5	6 1/2J	--
205/55R16		--	91	H	--	632	214	8.5	6 1/2J	--
205/55R16		--	91	T	--	632	214	8.5	6 1/2J	--
205/60R16		--	92	H	--	652	209	8.5	6J	--
205/60R16		--	96	H	XL	652	209	8.5	6J	--
215/60R16		--	95	H	--	664	221	8.5	6 1/2J	--
215/60R16		--	99	H	XL	664	221	8.5	6 1/2J	--
17	215/65R16	--	98	H	--	686	221	8.5	6 1/2J	--
	205/50R17	--	93	H	XL	638	214	8.5	6 1/2J	--



ULTRA HIGH PERFORMANCE WINTER TIRE

ICE BLAZER ALPINE EVO

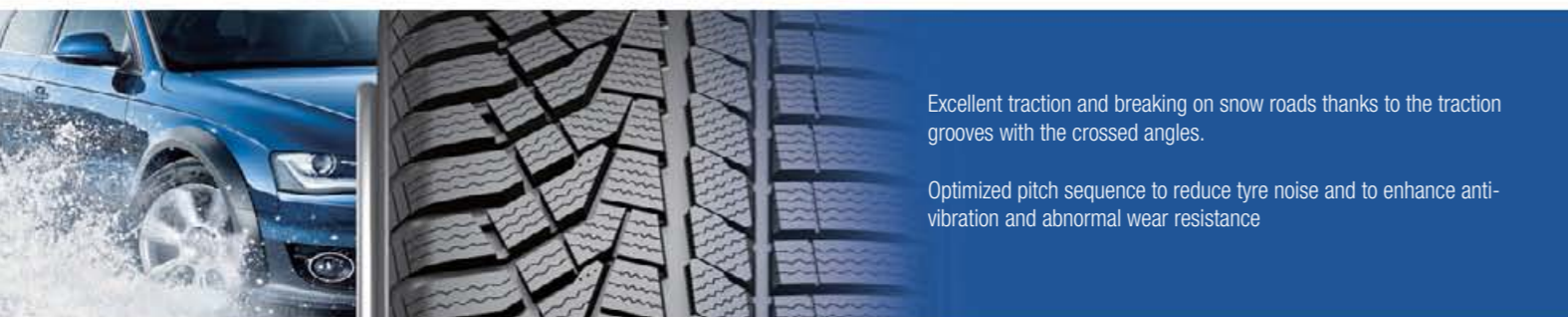
PERFORMANCE RATINGS:



ICE BLAZER ALPINE EVO

The latest and OE(Original Equipment) style tyre designs to bring extraordinary driving experiences, and to ensure for your safety as it provides optimum stability and controllability on all wintery roads.

- Ultra High-Performance tyre exclusively developed for European cars and SUVs.
- Asymmetric pattern with balanced handling and ride comfort as a winter tyre.
- 3D sipes and the lateral grooves to significantly increase snow traction and braking characteristic.
- The functionalized 100% silica compound not only to maximize grip, low RR and wear resistance but also to maintain rubber property so consistent tyre performance in wide range of winter temperature.



Excellent traction and breaking on snow roads thanks to the traction grooves with the crossed angles.

Optimized pitch sequence to reduce tyre noise and to enhance anti-vibration and abnormal wear resistance



Big and wide pattern blocks on the outside shoulder provide better control performance on dry wintry roads.

Computer simulated Tread profile for steering/ response and ride comfort of the winter tyre.

100% Silica Compound Technology - Nano particle-like highly dispersible silica introduced not only for grip but also low rolling resistance and wear resistance.

Optimized cold resistance compound for consistent snow/wet/ice/dry handling performance in all wintry conditions.



	SIZE	PR	LI	SR	XL	OD	SW	TD	RW	UTQG
						mm	mm	mm	Inch	
16	215/45R16	--	90	V	XL	600	213	8.5	7J	--
	215/55R16	--	97	H	XL	642	226	8.5	7J	--
	225/55R16	--	99	V	XL	654	233	8.5	7J	--
	215/70R16	--	100	H	--	708	221	8.5	6 1/2J	--
17	215/45R17	--	91	V	XL	626	213	8.5	7J	--
	225/45R17	--	91	H		634	225	8.6	7 1/2J	--
	225/45R17	--	94	V	XL	634	225	8.6	7 1/2J	--
	235/45R17	--	97	V	XL	644	236	8.5	8J	--
	245/45R17	--	99	V	XL	652	243	8.5	8J	--
	215/50R17	--	95	V	XL	648	226	8.6	7J	--
	225/50R17	--	98	V	XL	658	233	8.5	7J	--
	215/55R17	--	98	V	XL	668	226	8.5	7J	--
	225/55R17	--	101	V	XL	680	233	8.5	7J	--
	235/55R17	--	103	V	XL	690	245	8.5	7 1/2J	--
	215/60R17	--	100	V	XL	690	221	8.5	6 1/2J	--
	215/65R17	--	99	V	--	712	221	8.5	6 1/2J	--
	225/60R17	--	99	H	--	702	228	8.5	6 1/2J	--
	225/65R17	--	106	H	XL	724	228	8.5	6 1/2J	--
235/65R17	--	108	H	XL	738	240	8.5	7J	--	
265/65R17	--	116	H	XL	776	272	8.5	8J	--	
18	225/40R18	--	92	V	XL	637	230	8.5	8J	--
	245/40R18	--	97	V	XL	653	248	8.5	8 1/2J	--
	225/45R18	--	95	V	XL	659	225	8.5	7 1/2J	--
	235/45R18	--	98	V	XL	669	236	8.5	8J	--
	245/45R18	--	100	V	XL	677	243	8.5	8J	--
	215/55R18	--	99	V	XL	693	226	8.5	7J	--
	225/50R18	--	99	V	XL	683	233	8.5	7J	--
	225/55R18	--	102	V	XL	705	233	8.5	7J	--
	225/60R18	--	104	V	XL	727	228	8.5	6 1/2J	--
	235/40R18	--	95	V	XL	645	241	8.5	8 1/2J	--
	235/50R18	--	101	V	XL	693	245	8.5	7 1/2J	--
	235/55R18	--	104	H	XL	715	245	8.5	7 1/2J	--
	235/60R18	--	107	V	XL	739	240	8.5	7J	--
	255/40R18	--	99	V	XL	661	260	8.5	9J	--
255/45R18	--	103	V	XL	687	255	8.5	8 1/2J	--	
255/55R18	--	109	V	XL	737	265	8.5	8J	--	
265/60R18	--	114	H	XL	775	272	8.5	8J	--	
19	255/35R19	--	96	V	XL	661	260	8.6	9J	--
	225/40R19	--	93	W	XL	663	230	8.5	8J	--
	245/45R19	--	102	W	XL	703	243	8.5	8J	--
	235/35R19	--	91	W	XL	647	241	8.2	8 1/2J	--
	235/55R19	--	105	V	XL	741	245	8.5	7 1/2J	--
	255/40R19	--	100	V	XL	687	260	8.5	9J	--
	255/50R19	--	107	V	XL	739	265	8.5	8J	--
	255/55R19	--	111	V	XL	763	265	8.5	8J	--
275/40R19	--	105	V	XL	703	278	8.5	9 1/2J	--	
20	275/35R20	--	102	W	XL	700	278	8.2	9 1/2J	--
	315/35R20	--	110	V	XL	728	320	8.2	11J	--
	245/40R20	--	99	W	XL	704	248	8.5	8 1/2J	--
	275/40R20	--	106	V	XL	728	278	8.5	9 1/2J	--

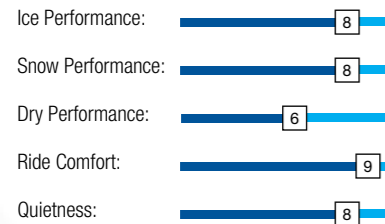


STUDDABLE WINTER TIRE

ICE BLAZER WST1



PERFORMANCE RATINGS:



The **ICE BLAZER WST1** is a studdable winter tire designed for drivers that demand maximum traction in severe winter weather conditions, letting you outperform the elements to get more out of the winter season.

- Green technology: Extensive use of environmentally friendly materials that meet European REACH requirements.
- Specially formulated tread compound allows the tread rubber to maintain flexibility for exceptional performance in extreme cold temperatures. Improved safety and handling in winter weather conditions (indicated with the Severe Service Emblem).
- Specially blended tread rubber formula for excellent grip in low temperatures.

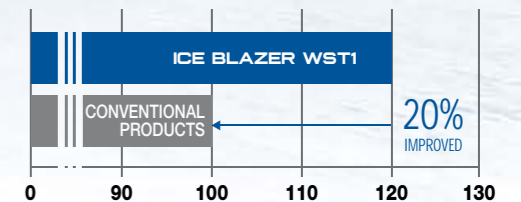


ANTI-SKID PROPERTY



Special Buffer Layer

Special rubber buffer layer at the bottom of the stud absorbs the impact force of the snow to prevent the falling out of studs.



Innovative Square Design

Increases the ground contact area of the tire to effectively improve grip performance and increase skid resistance.



Cold-Resistant Tread Rubber

Tread formula compounds ensure the tire maintains elasticity and softness in extreme cold weather conditions. This improves grip on ice and snow, improves hydroplaning resistance, and lowers rolling resistance.



V-shaped Tread Design

Improved grip on ice and snow, skid resistance, and effectively reduces noise emissions.

Sipe Design

Optimized sipe design ensures greater grip on ice and snow.

Improved Studded Technology

12 rows of studs are designed to maximize grip and traction performance for safer driving in winter weather.

Sipe Design

Optimized depth and length of sipes maintain tread rigidity and greatly enhance grip and handling.



	SIZE	PR	LI	SR	XL	OD	SW	TD	RW	UTQG
						mm	mm	mm	Inch	
13	155/70R13	--	75	T	--	548	157	10	4.50B	--
	165/70R13	--	79	T	--	562	170	10	5.00B	--
	175/70R13	--	82	T	--	576	177	10	5.00B	--
	155/80R13	--	79	T	--	578	157	10	4.50B	--
14	185/60R14	--	82	T	--	578	189	10	5 1/2J	--
	155/65R14	--	75	T	--	558	157	10	4 1/2J	--
	165/65R14	--	79	T	--	570	170	10	5J	--
	175/65R14	--	82	T	--	584	177	10	5J	--
	185/65R14	--	86	T	--	596	189	10	5 1/2J	--
	175/70R14	--	84	T	--	602	177	10	5J	--
	185/70R14	--	88	T	--	616	189	10	5 1/2J	--
	175/65R14C	6PR	90/88	Q	--	584	177	10	5J	--
	185R14C	8PR	102/100	Q	--	650	188	10	5 1/2J	--
	15	185/55R15	--	82	T	--	585	194	10	6J
185/60R15		--	84	T	--	603	189	10	5 1/2J	--
195/60R15		--	88	T	--	615	201	10	6J	--
175/65R15		--	84	T	--	609	177	10	5J	--
185/65R15		--	88	T	--	621	189	10	5 1/2J	--
195/65R15		--	91	T	--	635	201	10	6J	--
205/65R15		--	94	T	--	647	209	10	6J	--
215/65R15		--	96	T	--	661	221	10	6 1/2J	--
205/70R15		--	96	T	--	669	209	10	6J	--
215/70R15		--	98	T	--	683	221	10	6 1/2J	--
235/75R15	--	105	S	--	733	235	11	6 1/2J	--	



ICE BLAZER WST1

	SIZE	PR	LI	SR	XL	OD	SW	TD	RW	UTQG
						mm	mm	mm	Inch	
15	195/70R15C	8PR	104/102	Q	--	655	201	10.5	6J	--
	205/70R15C	8PR	106/104	R	--	669	209	10.5	6J	--
	215/70R15C	8PR	109/107	R	--	683	221	10.5	6 1/2J	--
	225/70R15C	8PR	112/110	Q	--	697	228	10.5	6 1/2J	--
16	205/50R16	--	87	T	--	612	214	10	6 1/2J	--
	205/55R16	--	91	T	--	632	214	10	6 1/2J	--
	215/55R16	--	97	H	XL	642	226	10	7J	--
	205/60R16	--	92	T	--	652	209	10	6J	--
	215/60R16	--	95	T	--	664	221	10	6 1/2J	--
	225/60R16	--	98	T	--	676	228	10	6 1/2J	--
	205/65R16	--	95	T	--	672	209	10	6J	--
	215/65R16	--	98	T	--	686	221	10	6 1/2J	--
	225/65R16	--	100	T	--	698	228	10	6 1/2J	--
	235/65R16	--	103	T	--	712	240	10	7J	--
	215/70R16	--	100	T	--	708	221	11	6 1/2J	--
	215/70R16	--	100	S	--	708	221	11	6 1/2J	--
	225/70R16	--	103	S	--	722	228	11	6 1/2J	--
	225/70R16	--	103	H	--	722	228	11	6 1/2J	--
	235/70R16	--	106	S	--	736	240	11	7J	--
	235/70R16	--	106	T	--	736	240	11	7J	--
	245/70R16	--	107	S	--	750	248	11	7J	--
	245/70R16	--	107	T	--	750	248	11	7J	--
	245/75R16	--	111	S	--	774	248	11	7J	--
	195/60R16C	6PR	99/97	S	--	640	201	10.5	6J	--
195/65R16C	8PR	104/102	R	--	660	201	10.5	6J	--	
205/65R16C	8PR	107/105	Q	--	672	209	10.5	6J	--	
215/65R16C	8PR	109/107	R	--	686	221	10.5	6 1/2J	--	
225/65R16C	8PR	112/110	R	--	698	228	10.5	6 1/2J	--	
235/65R16C	8PR	115/113	R	--	712	240	10.5	7J	--	
235/65R16C	10PR	121/119	R	--	712	240	10.5	7J	--	
195/75R16C	8PR	107/105	Q	--	698	196	10.5	5 1/2J	--	
205/75R16C	8PR	110/108	R	--	714	203	10.5	5 1/2J	--	
215/75R16C	8PR	113/111	R	--	728	216	10.5	6J	--	

	SIZE	PR	LI	SR	XL	OD	SW	TD	RW	UTQG
						mm	mm	mm	Inch	
17	215/45R17	--	91	T	XL	626	213	10	7J	--
	225/45R17	--	94	H	XL	634	225	10	7 1/2J	--
	235/45R17	--	97	T	XL	644	236	10	8J	--
	215/50R17	--	95	T	XL	648	226	10	7J	--
	225/50R17	--	98	H	XL	658	233	10	7J	--
	215/55R17	--	94	T	--	668	226	11	7J	--
	225/55R17	--	97	T	--	680	233	11	7J	--
	235/55R17	--	99	H	--	690	245	10	7 1/2J	--
	235/55R17	--	99	V	--	690	245	10	7 1/2J	--
	215/60R17	--	96	T	--	690	221	10	6 1/2J	--
	215/60R17	--	96	H	--	690	221	10	6 1/2J	--
	225/60R17	--	99	T	--	702	228	10	6 1/2J	--
	225/60R17	--	99	H	--	702	228	10	6 1/2J	--
	235/60R17	--	102	H	--	714	240	10	7J	--
	215/65R17	--	99	T	--	712	221	11	6 1/2J	--
	225/65R17	--	102	S	--	724	228	11	6 1/2J	--
	225/65R17	--	102	T	--	724	228	11	6 1/2J	--
	235/65R17	--	104	S	--	738	240	11	7J	--
	235/65R17	--	104	T	--	738	240	11	7J	--
	245/65R17	--	107	S	--	750	248	11	7J	--
245/65R17	--	107	T	--	750	248	11	7J	--	
265/65R17	--	112	T	--	776	272	11	8J	--	
265/70R17	--	115	S	--	804	272	11	8J	--	
18	225/40R18	--	92	H	XL	637	230	10	8J	--
	225/45R18	--	95	T	XL	659	225	10	7 1/2J	--
	245/45R18	--	100	H	XL	677	243	10	8J	--
	235/50R18	--	101	T	XL	693	245	10	7 1/2J	--
	215/55R18	--	95	T	--	693	226	10	7J	--
	225/55R18	--	98	T	--	705	233	10	7J	--
	235/55R18	--	100	H	--	715	245	11	7 1/2J	--
	235/55R18	--	100	T	--	715	245	11	7 1/2J	--
	255/55R18	--	105	H	--	737	265	10	8J	--
	255/55R18	--	105	V	--	737	265	10	8J	--
19	225/60R18	--	100	T	--	727	228	10	6 1/2J	--
	235/60R18	--	103	H	--	739	240	10	7J	--
20	255/50R19	--	107	H	XL	739	265	10	8J	--
	235/55R19	--	101	H	--	741	245	10	7 1/2J	--
20	275/40R20	--	106	H	XL	728	278	11	9 1/2J	--

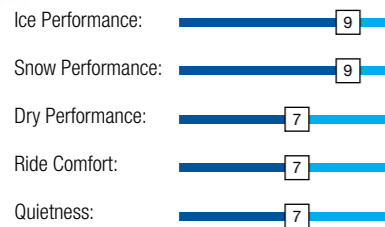


STUDDABLE WINTER TIRE

ICE BLAZER WST2 LT

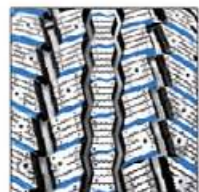


PERFORMANCE RATINGS:



A studdable winter tire designed for light trucks, the **WST2 LT** maintains maximum traction while tackling the toughest on-off road conditions, whether it be snow, ice, or mud.

- Green technology: Extensive use of environmentally friendly materials that meet European REACH requirements.
- Specially formulated LT tread compound allows the rubber to maintain flexibility for excellent performance in extreme temperatures. Improves safety and handling in extreme weather conditions (designated with the Severe Service Emblem).
- Specially blended silica-reinforced formula gives the tire excellent grip performance in low temperatures.



Angled Groove Design:
Efficiently drains slush and water to maximize grip and handling.

Variable Pitch Sequence:
Optimized to ensure a quiet and smooth ride.



	SIZE	PR	LI	SR	XL	OD	SW	TD	RW	UTQG
						mm	mm	mm	Inch	
16	LT225/75R16	10PR	115/112	Q	--	744	223	13.5	6J	--
	LT245/75R16	10PR	120/116	Q	--	774	248	13.5	7J	--
	185/75R16C	8PR	104/102	R	--	684	184	10.5	5J	--
17	LT245/75R17	10PR	121/118	R	--	800	248	13.5	7J	--
	LT265/70R17	10PR	121/118	Q	--	804	272	13.5	8J	--
	LT245/70R17	10PR	119/116	Q	--	776	248	13.5	7J	--
	245/70R17	--	110	S	--	776	248	11.5	7J	--
	265/70R17	--	115	S	--	804	272	11.5	8J	--
18	LT275/65R18	10PR	123/120	R	--	815	279	13.5	8J	--
	LT265/70R18	10PR	124/121	R	--	829	272	13	8J	--
	LT275/70R18	10PR	125/122	R	--	843	279	13	8J	--
	235/60R18	--	107	T	XL	739	240	11.5	7J	--
	245/60R18	--	105	T	--	751	248	11.5	7J	--
	265/60R18	--	110	T	--	775	272	11.5	8J	--
	235/65R18	--	106	T	--	763	240	11.5	7J	--
	265/65R18	--	114	T	--	801	272	11	8J	--
	275/65R18	--	116	S	--	815	279	11.5	8J	--
	255/70R18	--	113	S	--	815	260	11	7 1/2J	--
20	245/50R20	--	102	T	--	754	253	11	7 1/2J	--
	275/55R20	--	117	S	XL	810	284	11.5	8 1/2J	--
	275/60R20	--	119	S	XL	838	279	11.5	8J	--



STUDDABLE WINTER TIRE

ICE BLAZER WST3

PERFORMANCE RATINGS:

Ice Performance: 9

Snow Performance: 9

Dry Performance: 8

Ride Comfort: 8

Quietness: 8



- A winter studded tyre for cars & SUVs, the tire can also be used studies.
- The new replacement of its predecessor, Ice Blazer WST1.

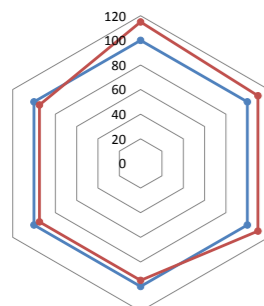
Ice Grip

The stud pattern has been arranged in a calculated variable sequence, along with a new stud hold and pad design which helps ensure studs provide maximum grip on ice.

Winter Traction and Braking

The unidirectional pattern with increased lateral and transverse grooves greatly improves snow, slush and even water drainage.

WST3 Performance

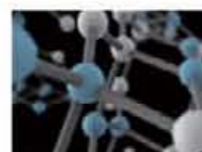


Reference WST3



Winter Handling

Multi-layer sipes and the edged saw-tooth blocks provide better steering and stability on snow and ice.



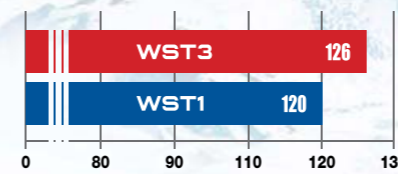
Winter Weather Compound

With the silica-rich tread compound, the winter tire maintains supreme grip thanks to its perfect calibration of hardness and flexibility in extremely cold weather conditions.

ICE BLAZER WST3 Formula Intro

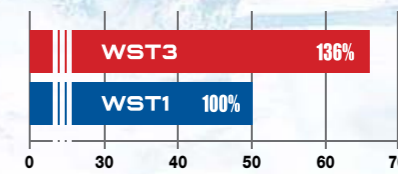
Increased Snow Traction Index in Pattern Design

Snow Traction Index %



Increased Stud Numbers

Studs/m (of tyre circumference)



Trafi:

WST3 passed Over-Run testing in Test World Finland; the combination of tire makeup and studs was approved by the Finnish authority.

	SIZE	PR	LI	SR	XL	OD	SW	TD	RW	UTQG
						mm	mm	mm	Inch	
13	155/70R13	--	75	T	--	548	157	9.2	4.50B	--
	165/70R13	--	79	T	--	562	170	9.2	5.00B	--
	175/70R13	--	82	T	--	576	177	9.2	5.00B	--
	155/80R13	--	79	T	--	578	157	9.2	4.50B	--
	165/80R13	--	83	T	--	594	165	9.2	4.50B	--
14	185/60R14	--	82	T	--	578	189	9.2	5 1/2J	--
	155/65R14	--	75	T	--	558	157	9.2	4.50B,4 1/2J	--
	165/65R14	--	79	T	--	570	170	9.2	5.00B/5J	--
	175/65R14	--	86	T	XL	584	177	9.2	5J	--
	185/65R14	--	90	T	XL	596	189	9.2	5 1/2J	--
	175/70R14	--	84	T	--	602	177	9.2	5.00B/5J	--
	185/70R14	--	92	T	XL	616	189	9.2	5 1/2J	--
15	185/80R14	--	91	Q	--	652	184	9.2	5J	--
	185/55R15	--	86	T	XL	585	194	9.2	6J	--
	185/60R15	--	88	T	XL	603	189	9.2	5 1/2J	--
	195/60R15	--	88	T	--	615	201	9.2	6J	--
	175/65R15	--	84	T	--	609	177	9.2	5J	--
	185/65R15	--	92	T	XL	621	189	9.2	5 1/2J	--
	195/65R15	--	95	T	XL	635	201	9.2	6J	--
	205/65R15	--	94	T	--	647	209	9.2	6J	--
	215/65R15	--	96	T	--	661	221	9.2	6 1/2J	--
	205/70R15	--	100	T	XL	669	209	9.2	6J	--
15	215/70R15	--	98	T	--	683	221	9.2	6 1/2J	--
	235/75R15	--	105	S	--	733	235	9.2	6 1/2J	--



ICE BLAZER WST3

	SIZE	PR	LI	SR	XL	OD	SW	TD	RW	UTQG
						mm	mm	mm	Inch	
16	205/50R16	--	87	T	--	612	214	9.2	6 1/2J	--
	205/55R16	--	94	T	XL	632	214	9.2	6 1/2J	--
	215/55R16	--	97	T	XL	642	226	9.2	7J	--
	225/55R16	--	99	T	XL	654	233	9.2	7J	--
	205/60R16	--	96	T	XL	652	209	9.2	6J	--
	215/60R16	--	99	T	XL	664	221	9.2	6 1/2J	--
	225/60R16	--	98	T	--	676	228	9.2	6 1/2J	--
	235/60R16	--	100	S	--	688	240	9.2	7J	--
	205/65R16	--	95	T	--	672	209	9.2	6J	--
	215/65R16	--	102	T	XL	686	221	9.2	6 1/2J	--
	215/70R16	--	100	T	--	708	221	9.2	6 1/2J	--
	225/70R16	--	103	T	--	722	228	9.2	6 1/2J	--
	235/70R16	--	106	T	--	736	240	9.2	7J	--
	245/70R16	--	107	T	--	750	248	9.2	7J	--
	255/70R16	--	111	T	--	764	260	9.2	7 1/2J	--
	265/70R16	--	112	T	--	778	272	9.2	8J	--
	275/70R16	--	114	T	--	792	279	9.2	8J	--
	235/75R16	--	108	T	--	758	235	9.2	6 1/2J	--
	245/75R16	--	111	S	--	774	248	9.2	7J	--
	17	215/45R17	--	91	T	XL	626	213	9.2	7J
225/45R17		--	94	T	XL	634	225	9.2	7 1/2J	--
235/45R17		--	97	T	XL	644	236	9.2	8J	--
215/50R17		--	95	T	XL	648	226	9.2	7J	--
225/50R17		--	98	T	XL	658	233	9.2	7J	--
215/55R17		--	98	T	XL	668	226	9.2	7J	--
225/55R17		--	101	T	XL	680	233	9.2	7J	--
235/55R17		--	103	T	XL	690	245	9.2	7 1/2J	--
215/60R17		--	100	T	XL	690	221	9.2	6 1/2J	--
225/60R17		--	103	T	XL	702	228	9.2	6 1/2J	--
235/60R17		--	102	T	--	714	240	9.2	7J	--
215/65R17		--	99	T	--	712	221	9.2	6 1/2J	--
225/65R17		--	102	T	--	724	228	9.2	6 1/2J	--
235/65R17		--	104	T	--	738	240	9.2	7J	--
245/65R17		--	107	T	--	750	248	9.2	7J	--
255/65R17		--	114	T	XL	764	260	9.2	7 1/2J	--
265/65R17		--	112	T	--	776	272	9.2	8J	--
245/70R17	--	110	S	--	776	248	9.2	7J	--	
265/70R17	--	115	S	--	804	272	9.2	8J	--	

	SIZE	PR	LI	SR	XL	OD	SW	TD	RW	UTQG	
						mm	mm	mm	Inch		
18	225/40R18	--	92	H	XL	637	230	9.2	8J	--	
	245/40R18	--	97	T	XL	653	248	9.2	8 1/2J	--	
	225/45R18	--	95	T	XL	659	225	9.2	7 1/2J	--	
	245/45R18	--	100	T	XL	677	243	9.2	8J	--	
	235/50R18	--	101	T	XL	693	245	9.2	7 1/2J	--	
	215/55R18	--	95	T	--	693	226	9.2	7J	--	
	225/55R18	--	102	T	XL	705	233	9.2	7J	--	
	235/55R18	--	100	T	--	715	245	9.2	7 1/2J	--	
	255/55R18	--	105	T	--	737	265	9.2	8J	--	
	225/60R18	--	104	T	XL	727	228	9.2	6 1/2J	--	
	235/60R18	--	103	T	--	739	240	9.2	7J	--	
	275/65R18	--	116	T	--	815	279	9.2	8J	--	
	19	235/35R19	--	91	T	XL	647	241	9.2	8 1/2J	--
		255/45R19	--	104	T	XL	713	255	9.2	8 1/2J	--
255/50R19		--	107	T	XL	739	265	9.2	8J	--	
265/50R19		--	110	T	XL	749	277	9.2	8 1/2J	--	
20	235/55R19	--	101	T	--	741	245	9.2	7 1/2J	--	
	255/35R20	--	97	T	XL	686	260	9.2	9J	--	
	315/35R20	--	110	T	XL	728	320	9.2	11J	--	
	275/40R20	--	106	T	XL	728	278	9.2	9 1/2J	--	
	275/55R20	--	117	T	XL	810	284	9.2	8 1/2J	--	
	275/60R20	--	115	T	--	838	279	9.2	8J	--	

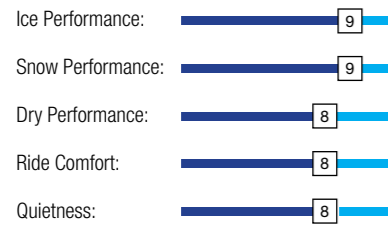


STUDLESS WINTER TIRE

ICE BLAZER ARCTIC



PERFORMANCE RATINGS:



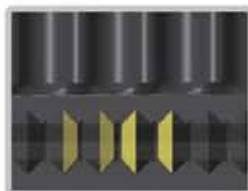
Asymmetric Pattern

Inside Tread:

The Z-shaped cross pattern increases the tire footprint and improves road surface adhesion. The larger number of horizontal sipes increases grip to improve braking on ice and snow.

Outside Tread:

The increased number of crossing grooves and sipes effectively pack and discharge snow to maintain grip on snow and ice will improve braking and driving capabilities.



3D Interlocking Sipes

The tread blocks are separated into a dense group of fine sipes which improve tire traction on snow and ice. The base of the sipes are interlocked to enhance block stiffness which ensures greater buckling resistant and improves driving performance on wet and dry roads.

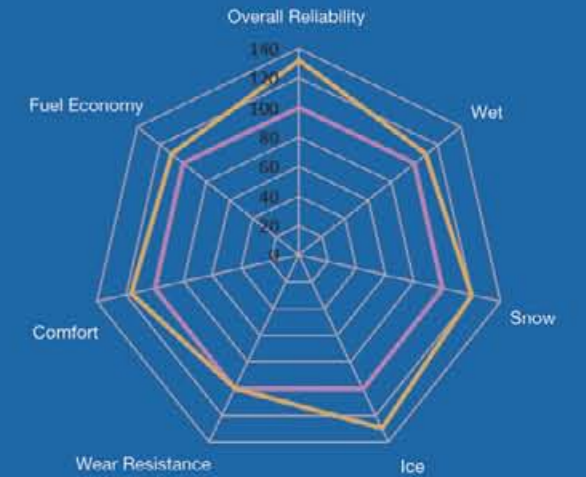


Serrated Grooves

The micro grooves subdue sound waves which effectively reduce noise emissions. The grooves are also capable of discharging broken-up ice and snow to improve traction.

Performance Comparison

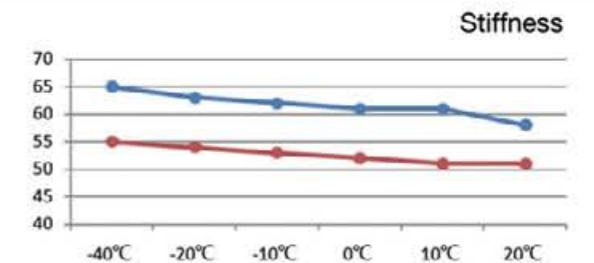
Arctic Last Generation



Compound Stiffness

Applying a new generation tire formula has optimized the rubber property in extremely low temperatures. Compared with the previous generation, the new formula has maintain wear resistance while enhancing tyre performance in winter weather.

Test Conditions	Recipe	Last Generation	ARCTIC
-40°C		65	55
-20°C		63	54
-10°C		62	53
0°C		61	52
10°C		61	51
20°C		58	51



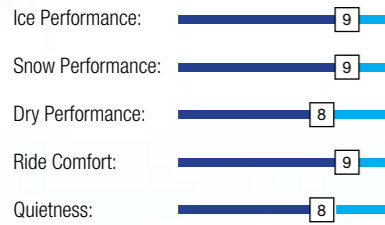
	SIZE	PR	LI	SR	XL	OD	SW	TD	RW	UTQG
						mm	mm	mm	Inch	
14	185/65R14	--	86	T	--	596	189	8.7	5 1/2J	--
	175/70R14	--	88	T	XL	602	177	8.7	5J	--
	185/70R14	--	88	H	--	616	189	8.7	5 1/2J	--
15	195/55R15	--	85	H	--	595	201	8.7	6J	--
	185/60R15	--	88	H	XL	603	189	8.7	5 1/2J	--
	195/60R15	--	88	T	--	615	201	8.7	6J	--
	185/65R15	--	88	T	--	621	189	8.7	5 1/2J	--
	195/65R15	--	91	T	--	635	201	8.7	6J	--
	205/65R15	--	94	H	--	647	209	9	6J	--
	205/70R15	--	96	T	--	669	209	9	6J	--
16	205/55R16	--	94	H	XL	632	214	9	6 1/2J	--
	215/55R16	--	97	H	XL	642	226	9	7J	--
	225/55R16	--	99	H	XL	654	233	9	7J	--
	205/60R16	--	96	H	XL	652	209	9	6J	--
	215/60R16	--	99	H	XL	664	221	9	6 1/2J	--
17	215/45R17	--	87	H	--	626	213	9	7J	--
	225/45R17	--	91	H	--	634	225	9	7 1/2J	--
	235/45R17	--	94	H	--	644	236	9	8J	--
	205/50R17	--	89	H	--	638	214	9	6 1/2J	--
	215/50R17	--	91	T	--	648	226	9	7J	--
	225/50R17	--	98	H	XL	658	233	9	7J	--
	215/55R17	--	94	H	--	668	226	9	7J	--
	225/55R17	--	97	H	--	680	233	9	7J	--
	225/55RF17	--	101	H	XL	680	233	9	7J	--
18	225/45R18	--	95	H	XL	659	225	9	7 1/2J	--
	235/45R18	--	98	H	XL	669	236	9	8J	--
	245/45R18	--	100	H	XL	677	243	9	8J	--
	245/45RF18	--	100	H	XL	677	243	9	8J	--



STUDLESS WINTER SUV TIRE

ICE BLAZER ARCTIC SUV

PERFORMANCE RATINGS:



The crisscrossing grooves designed on the tread block deliver more grip when driving in wet conditions.



The 3D shoulder design enlarges the tire contact area and enhances lateral traction

The overall design of the shoulder improves handling performance and ensures that performance doesn't degrade over the tire's lifetime.



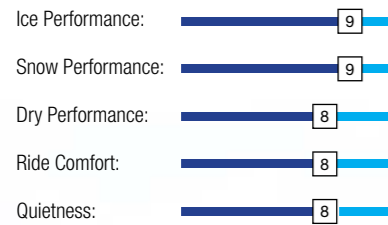
	SIZE	PR	LI	SR	XL	OD	SW	TD	RW	UTQG
						mm	mm	mm	Inch	
16	215/65R16	--	98	H	--	686	221	10	6 1/2J	--
	235/70R16	--	106	S	--	736	240	10	7J	--
	245/70R16	--	107	S	--	750	248	10	7J	--
17	215/60R17	--	96	T	--	690	221	10	6 1/2J	--
	215/65R17	--	99	T	--	712	221	10	6 1/2J	--
	225/60R17	--	99	T	--	702	228	10	6 1/2J	--
	225/65R17	--	102	S	--	724	228	10	6 1/2J	--
	235/55R17	--	99	H	--	690	245	10	7 1/2J	--
18	215/55R18	--	99	H	XL	693	226	10	7J	--
	235/55R18	--	104	H	XL	715	245	10	7 1/2J	--
	235/60R18	--	107	T	XL	739	240	10	7J	--
	235/65R18	--	106	T	--	763	240	10	7J	--
	255/55R18	--	109	H	XL	737	265	10	8J	--



STUDLESS WINTER SUV TIRE

ICE BLAZER ARCTIC EVO

PERFORMANCE RATINGS:



Interlocked Sipes

The tread blocks are separated by a dense group of jagged sipes which improve tire traction. These sipes are interlocked to enhance block stiffness for greater driving performance on wet and dry conditions.



	SIZE	PR	LI	SR	XL	OD	SW	TD	RW	UTQG
						mm	mm	mm	Inch	
18	225/50R18	--	99	V	XL	683	233	10	7J	--
	225/55R18	--	98	H	--	705	233	10	7J	--
	225/60R18	--	100	T	--	727	228	10	6 1/2J	--
	235/50R18	--	97	H	--	693	245	10	7 1/2J	--
	245/60R18	--	105	H	--	751	248	10	7J	--
	265/60R18	--	110	T	--	775	272	10	8J	--
19	225/45R19	--	96	V	XL	685	225	10	7 1/2J	--
	225/55R19	--	99	H	--	731	233	10	7J	--
	235/50R19	--	103	H	XL	719	245	10	7 1/2J	--
	235/55R19	--	101	H	--	741	245	10	7 1/2J	--
	245/55R19	--	103	H	--	753	253	10	7 1/2J	--
	255/45R19	--	104	V	XL	713	255	10	8 1/2J	--
	255/50R19	--	107	H	XL	739	265	10	8J	--
20	235/55R20	--	105	V	XL	766	245	10	7 1/2J	--
	245/50R20	--	102	H	--	754	253	10	7 1/2J	--
	255/50R20	--	109	H	XL	764	265	10	8J	--
	255/55R20	--	110	V	XL	788	265	10	8J	--
	275/40R20	--	106	V	XL	728	278	10	9 1/2J	--
	275/50R20	--	113	V	XL	784	284	10	8 1/2J	--
21	275/45R21	--	110	V	XL	781	273	10	9J	--
RF	245/45RF19	--	102	V	XL	703	243	10	8J	--
	245/50RF18	--	100	V	--	703	253	10	7 1/2J	--
	275/40RF19	--	105	V	XL	703	278	10	9 1/2J	--



Asymmetric Pattern

Outside Tread:
The wide shoulder blocks deliver more effective traction and braking performance when driving and turning on snow and ice.

Inside Tread:
The staggered narrow grooves provide greater overall traction for safer driving on snow and ice.

Shoulder Grooves

The jagged shoulder grooves can grip better to snow and ice for enhanced traction.



Outer Shoulder Design

The special outside shoulder design improves grip in deep snow for safer driving.

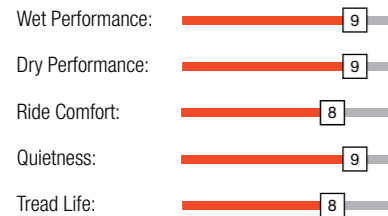


ULTRA HIGH PERFORMANCE TIRE

ATREZZO RUN-FLAT

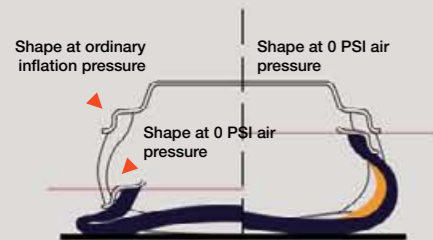


PERFORMANCE RATINGS:

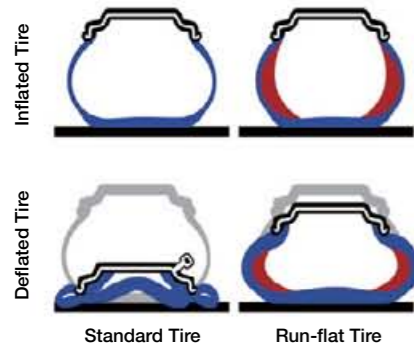


ATREZZO RUN-FLAT

Run-flat tires (RFT), also known as “self-supporting run-flat tires,” are an important safety feature for any vehicle. A Run-flat tire is built with a thicker sidewall to help support the tire shape after losing air. This allows the tire to continue to run safely, but at a limited speed and mileage. When normal tires are punctured, they can instantly lead to a severe sidewall collapse; in the event of a collapse, the vehicle loses its only support which can cause the vehicle’s center of gravity to change instantaneously. RFT helps to lessen the severity of a flat tire and allows you to get to the closest destination safely.



This is where run-flat tires come in; after the tire begins leaking air, the sidewall maintains its shape in order to continue to support the weight of the vehicle.



RFT Product Features:

1. Greater safety and the driver will not be delayed or stranded on remote highways because of a flat tire.
2. Avoid accidents caused by the loss of control from punctures or air leaks:
When the tire is flat, even if all the air pressure has leaked from the tire, the vehicle will continue to drive at normal speeds without having to be replaced immediately.
3. Even when your tire begins leaking air you can drive to your local tire dealer to have it repaired. RFT technology also means there is no need to carry a spare which helps increase storage space within the vehicle.

	SIZE	PR	LI	SR	XL	OD	SW	TD	RW	UTQG
						mm	mm	mm	Inch	
16	195/55RF16	--	87	V	--	620	201	8.2	6J	340AA
	205/55ZRF16	--	91	W	--	632	214	8.3	6 1/2J	340/A/A
17	205/45RF17	--	84	V	--	616	206	8.2	7J	340/A/A
	205/45RF17	--	84	W	--	616	206	8.2	7J	340/A/A
	205/45RF17	--	88	W	XL	616	206	8.2	7J	340/A/A
	225/45ZRF17	--	91	W	--	634	225	8.2	7 1/2J	340/A/A
	225/45ZRF17	--	91	Y	--	634	225	8.2	7 1/2J	340/A/A
	205/50ZRF17	--	89	W	--	638	214	8.2	6 1/2J	340/A/A
	225/50ZRF17	--	94	W	--	658	233	8.2	7J	340AA
	225/55ZRF17	--	97	Y	--	680	233	8.2	7J	340/A/A
18	255/35ZRF18	--	90	Y	--	635	260	8.2	9J	340/A/A
	225/40ZRF18	--	88	Y	--	637	230	8.2	8J	340/A/A
	225/40ZRF18	--	92	Y	XL	637	230	8.2	8J	340/A/A
	245/40ZRF18	--	93	Y	--	653	248	8.2	8 1/2J	340/A/A
	245/40ZRF18	--	97	Y	XL	653	248	8.2	8 1/2J	340/A/A
	245/45ZRF18	--	96	W	--	677	243	8	8J	340/A/A
	245/45ZRF18	--	100	W	XL	677	243	8.2	8J	340/A/A
	245/50ZRF18	--	100	Y	--	703	253	8.2	7 1/2J	340/A/A
19	275/35ZRF19	--	96	Y	--	675	278	8.2	9 1/2J	340/A/A
	275/35ZRF19	--	100	Y	XL	675	278	8.2	9 1/2J	340/A/A
	245/40ZRF19	--	94	Y	--	679	248	8.2	8 1/2J	340/A/A
	245/40ZRF19	--	98	Y	XL	679	248	8.2	8 1/2J	340/A/A

